



Sussex Partnership
NHS Foundation Trust

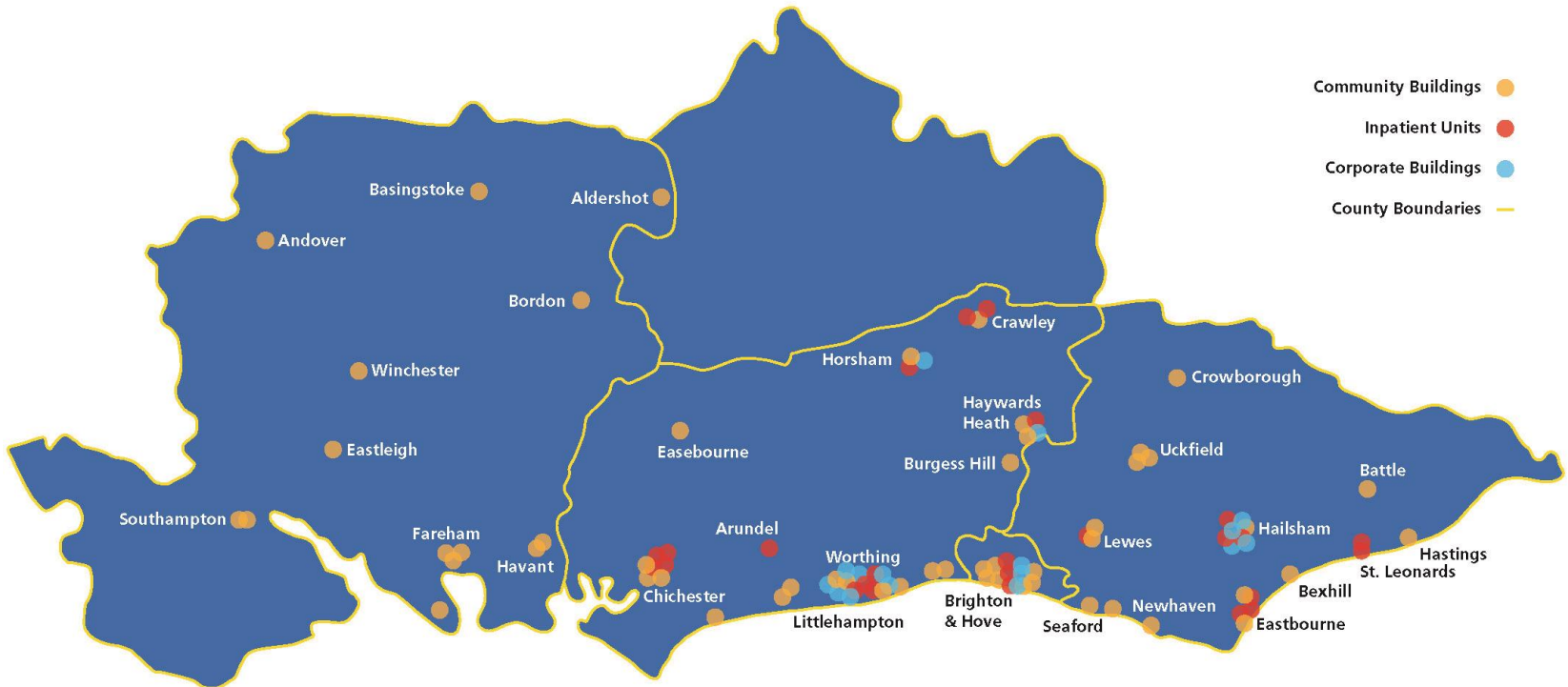
The Need for an Integrated Service Response to Homelessness

Peter Molyneux, Chair



About us

Our services



Serving a population of 1.6m in Sussex and 1.3m in Hampshire

ADULT MENTAL
HEALTH LIAISON
SERVICES CARRIED
OUT **9,448**
ASSESSMENTS
DURING THE
LAST YEAR



Around
16,000

PEOPLE RECEIVE
CARE FROM OUR
DEMENTIA AND
MEMORY
ASSESSMENT TEAMS
EVERY YEAR

MORE THAN
76,000

ADULTS AND CHILDREN
RECEIVE SUPPORT
AND TREATMENT IN
THEIR OWN HOMES
OR ANOTHER
COMMUNITY SETTING



AROUND
3,830

PEOPLE ARE
ADMITTED TO
ONE OF OUR

13 INPATIENT
SERVICES

EVERY YEAR

OUR LEARNING
DISABILITY
SERVICE
PROVIDED
SPECIALIST
HEALTH
INTERVENTIONS
TO MORE THAN
2,100
people
IN 2017/18



MORE THAN **30,000**
ADULTS ATTEND OUTPATIENT
APPOINTMENTS EACH YEAR



103 COMMUNITY AND
INPATIENT SITES
684 BEDS
46 WARDS

Mental Health services suffer a disproportionate pressure on finances when NHS services are more generally under pressure.





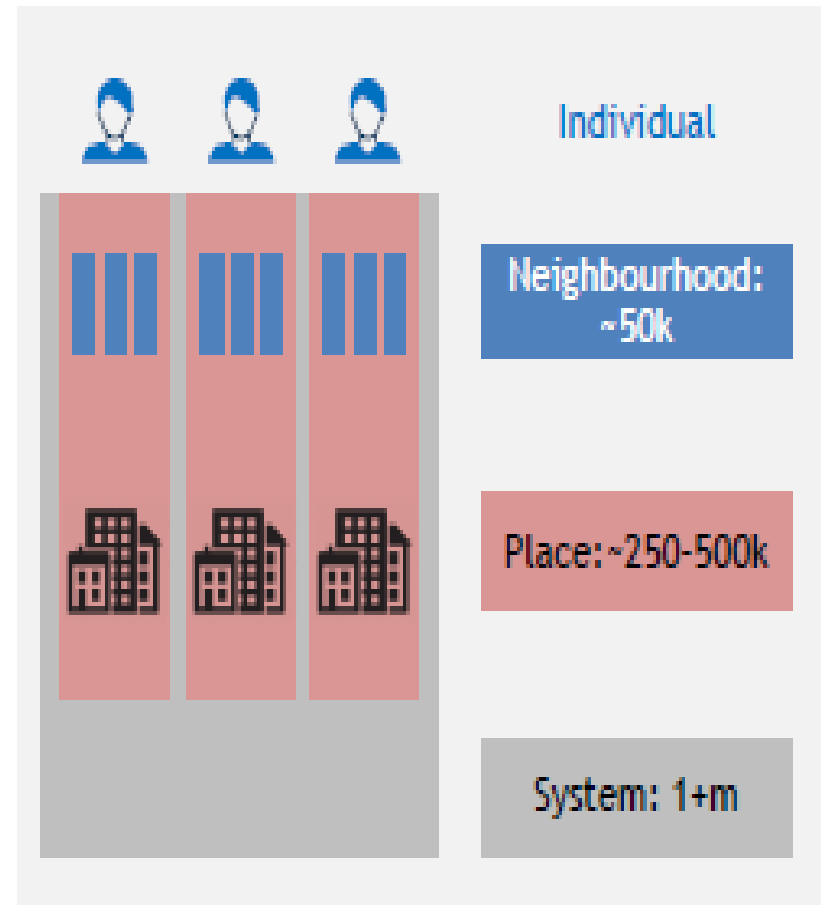
The NHS Long Term Plan



Local services can provide better and more joined-up services for patients when different organisations work together in an integrated way.

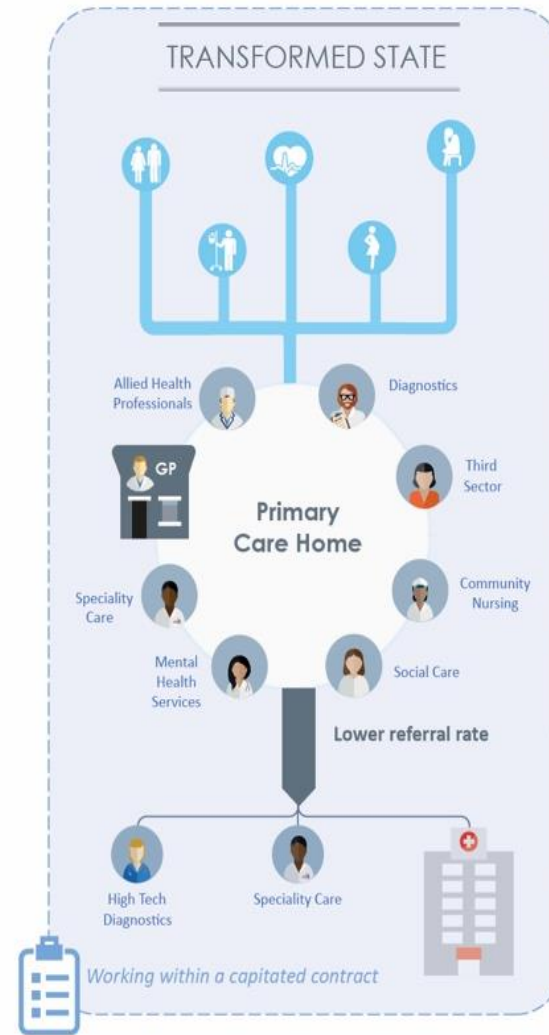
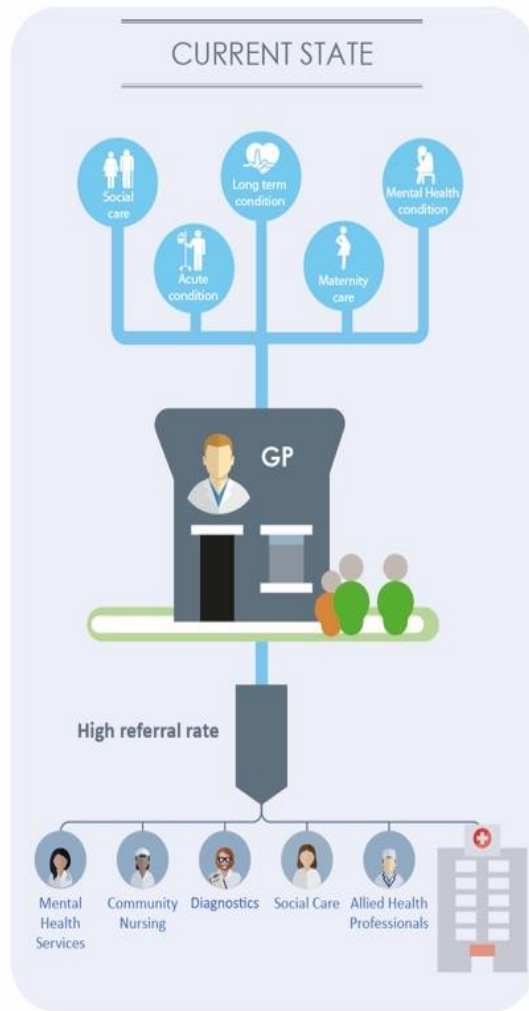
NHS 10 Year Plan : What is expected ?

“... NHS should have shared responsibility for wider objectives in relation to population health and the use of NHS resources...”



| | Generally well | | Long term conditions / Long term needs | | Complexity of LTC(s) and/or disability | |
|---------------------------|----------------|-----------|--|-----------|--|-----------|
| | Low risk | High risk | Low risk | High risk | Low risk | High risk |
| Children and Young People | | | | | | |
| Working Age Adults | | | | | | |
| Older People | | | | | | |

| | Generally well | | Long term conditions / Long term needs | | Complexity of LTC(s) and/or disability |
|-----------------------------------|----------------|--|---|--------------------------------|---|
| | Low risk | High risk | Low risk | High risk | High risk |
| Children and Young People (0- 25) | | <p>Child only risk factors</p> <ul style="list-style-type: none"> • Prematurity • Low birth weight • Looked after children • Child in need/child protection • ? Free school meals • Plus all risk factors below | <p>Single LTC</p> <ul style="list-style-type: none"> • Respiratory condition • Cardiovascular condition • Musculoskeletal condition | <p>2 + LTC</p> | <ul style="list-style-type: none"> • Two or more LTCs in different body systems • Progressive or metastatic malignancy • Progressive condition with expected reduced life expectancy (exclude those with remission for more than 5 years) • Continuous reliance on technology for at least 6 months • Plus complexities as below |
| Working Age Adults (26- 65) | | <ul style="list-style-type: none"> • Smoker (14yrs +) • BMI >30 • BP > 150/90 • Physical inactivity • Drug misuse • Alcohol >14 units • Pre-Diabetes • Gestational diabetes • Tired all the time • Poor quality accommodation • Social isolation | <ul style="list-style-type: none"> • Renal condition • Cancer • Gastrointestinal condition • Diabetes • Learning disability • Mental Health condition | <p>Or</p> | <p>1+ LTC with</p> <ul style="list-style-type: none"> • Palliative Care need • Dementia • Nursing Home |
| (66 and over) Older People | | <ul style="list-style-type: none"> • Temporary accommodation • Homeless • Low income • Stress Problem situation relating to social and personal history • Bereaved in last year • Carer • Frequent attender to primary care | <ul style="list-style-type: none"> • Dermatological condition | <p>1 LTC plus risk factors</p> | <ul style="list-style-type: none"> • Residential Home • Immuno suppressed • Housebound • Reduced Mobility • Sensory impairment |



**Horizontal
Integration**

Vs

**Vertical
Integration**

Improving Population Health

- Prevention
- Health inequalities
- Wider determinants of health and wellbeing
- Personalised Care

Improving Health Outcomes

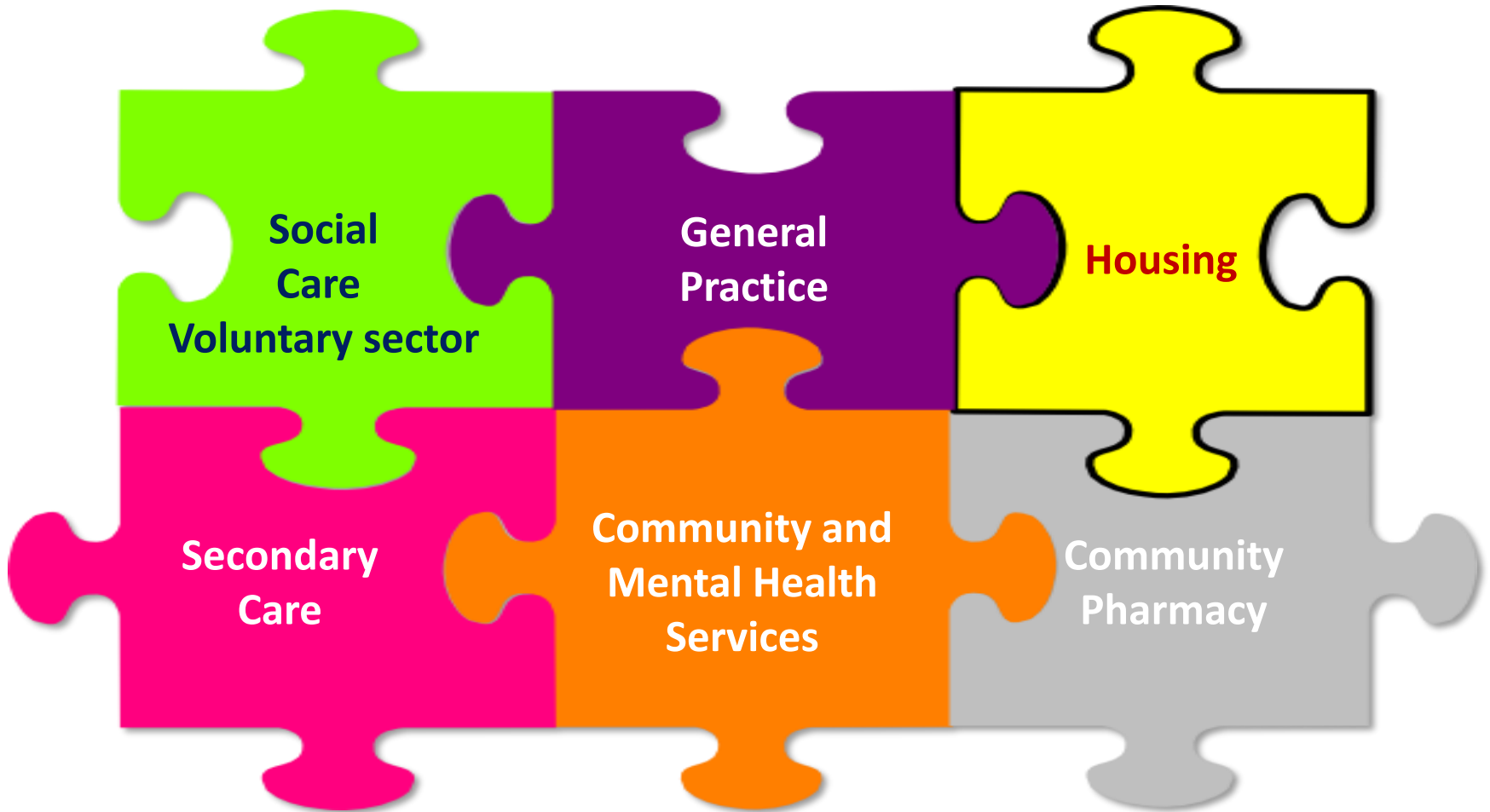
- Diabetes
- Mental Health, Learning Disabilities and Autism
- COPD

System change and integration

- Primary and Community Care
- Urgent and Emergency Care
- Improving planned care and reducing variation
- Providers working together

Enablers

- Harnessing the power of communities
- Workforce
- Digital
- Capital and estates
- Leadership and OD
- Population health management capability.
- Finance
- Innovation and Improvement
- Commissioning





Engagement and involvement

People participation

The poster is blue with white and light blue text. It features the NHS logo in the top right corner. The main headline reads 'WE WANT YOU' with a checkmark inside the 'O'. Below this, it says 'TO TELL US WHAT YOU THINK ABOUT OUR SERVICES'. A section titled 'There are three easy ways to participate and tell us about your experience:' lists three methods: 1. Use the app, 2. Go online to Care Opinion or NHS Choices, and 3. Share on Twitter. At the bottom, it provides an email address for more information and a graphic of raised hands.

Sussex Partnership NHS Foundation Trust Experience Survey

WE WANT YOU

TO TELL US WHAT YOU THINK ABOUT OUR SERVICES

There are three easy ways to participate and tell us about your experience:

- 1** Use the Sussex Experience Survey: Search Sussex Experience Survey in your App store and ask locally for the team code.
Go online, no code needed: <http://fft.sussexpartnership.nhs.uk/>
Ask locally for a paper copy of the survey
- 2** Go online to tell us what you think:
Care Opinion: www.careopinion.org.uk
NHS Choices: www.nhs.uk
- 3** Share your experiences of the Trust via Twitter: @withoutstigma

For more information and to find out about other ways to get involved, email:
Participation@sussexpartnership.nhs.uk

People Participation Team

Sussex Experience Survey : 206 downloads to date

Peer Support Worker role developed

Expert by Experience programme

Peer Apprenticeship

What are the likely obstacles ?

Mental health services are disengaged from homeless people.

There is a lack of engagement with homeless people.

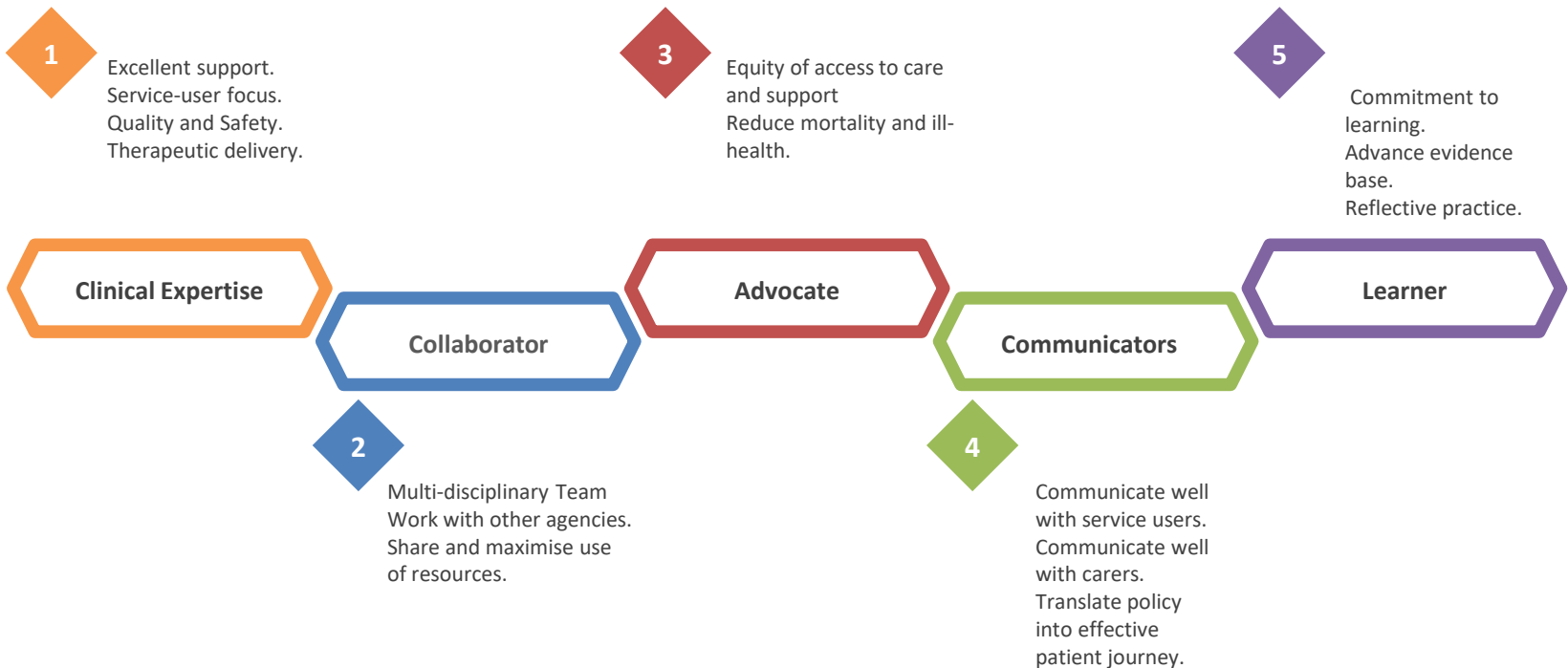
Level of investment is low.

There is an over concentration on the most complex cases – 80/20 rule.

Professionals working at the margins do not have expertise respected.

New forms of service are more easily accessed by non-priority groups who are good at navigating system.

Change takes time, developing the right relationships takes time.



**MENTAL HEALTH SERVICES MUST NOT SEPARATE OURSELVES FROM THE
REST OF SOCIETY – LEADERS HAVE A CLEAR ROLE IN ADDRESSING SOCIAL
INJUSTICE AND INEQUALITY.**



Follow us

 facebook.com/sussexpartnership

 [@withoutstigma](https://twitter.com/withoutstigma)

 [Sussex Partnership NHS Foundation Trust](https://www.linkedin.com/company/sussex-partnership-nhs-foundation-trust)

 [sussex_partnership_nhs](https://www.instagram.com/sussex_partnership_nhs)

 www.headsoncharity.org

Copyright © 2018 Sussex Partnership NHS Foundation Trust
