

‘I don’t go there, it’s full of smack heads’

-

Influences on Centre Use and Inclusion of a Homeless Day Centre

Emily Ballin

Cardiff University, UK

CARDIFF
UNIVERSITY

PRIFYSGOL
CAERDYDD

Overview

- Case Study
 - Positioning the ethnography
 - Background
 - Method
- Why ethnography?
 - Purpose 1: Sensitivity
 - Purpose 2: Perspectives
- Conclusion
- Question and Answer

Case Study

Positioning the Ethnography

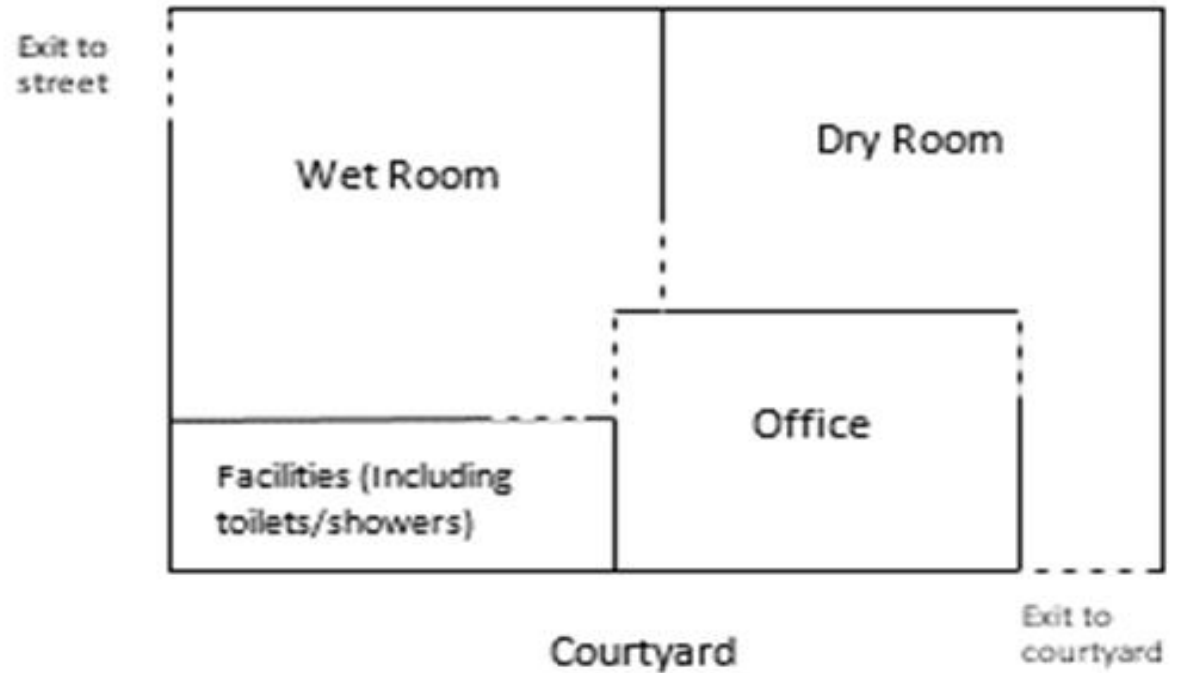
- Who am I?
 - I was a **volunteer** at the centre in question
 - I conducted the work as a full time student undergraduate
- Why is ethnography important?
 - **Sensitivity** to (vulnerable) participants
 - Create a space where **stories could be heard**
 - Apply **subjective** perspectives to **inform change**

Case Study Background

- Charity organisation
 - Open 8:30-17:30, 365 days a year
- Services:
 - Food, hygiene, shelter, needle exchange, housing support, etc.
- Low-barrier

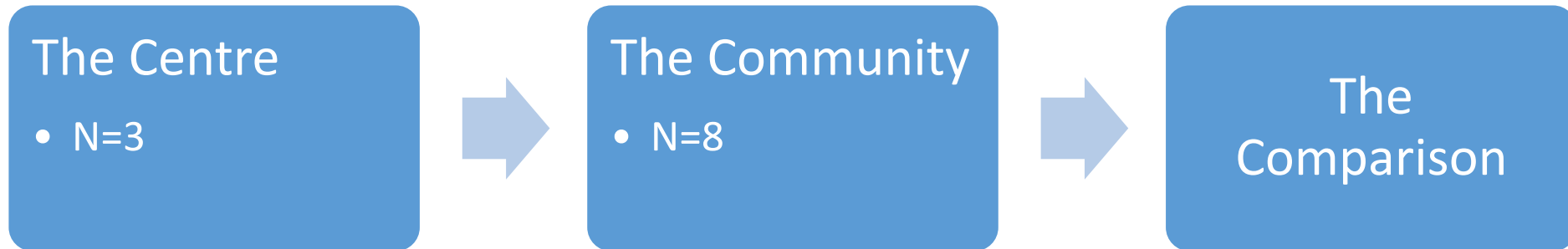
Map 1. Floorplan of the centre

[Not to scale]



Case Study Method

“Homelessness is **experienced by individuals** ... but it is **also imagined** ... Such imaginings (or ideological constructions) tend to take on a **life of their own.**” (Somerville 2013)



Why ethnography?

Purpose 1 - Sensitivity

Jolene



~40-50 years old

Multiple times of homelessness

Recently had a child

Would not chat with me the first 3 times we met

Why ethnography?

Purpose 2 – Perspectives

The Centre

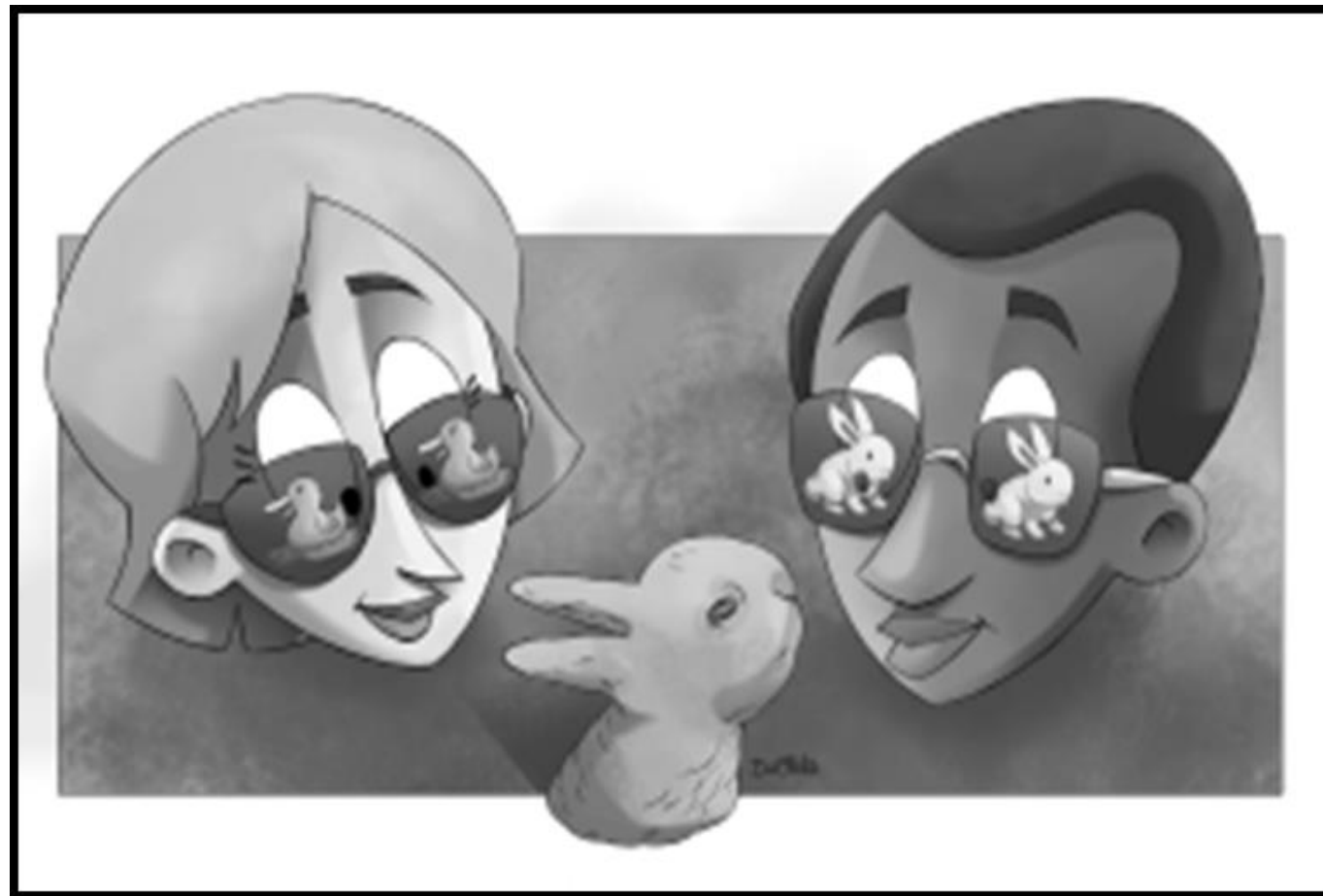
- People saying they don't use the centre as a begging technique

The Community

- Did not feel comfortable using the space (e.g. due to drug users, gender, etc.)

The Comparison

- There were not the resources to bring about necessary change



Conclusion

This ethnography:

- Supported both parties voices without judging them
- Juxtapose narratives
- Rich, personal data
- Brought together to highlight further issues

Value in policy recommendation and critique

- A call for change

Question & Answer

- Thank you for listening