



CITY OF
ATHENS

Counting rough sleepers in Athens: A Brief History of an Administrative Innovation

City of Athens

FEANTSA

13th European Research Conference

21.09.18



Dr.Theodora Papadimitriou

City of Athens

Mayor's Advisor on Social Policy

✓ **Street counts in Athens: Why & How?**

✓ **Results: revisiting our perception on urban homelessness**

✓ **Lessons learned & pathways to implementation**

✓ **Towards a data-driven policy: follow-up & spin-off projects**



- ✓ **Street counts in Athens: Why & How?**
- ✓ **Results: revisiting our perception on urban homelessness**
- ✓ **Lessons learned & pathways to implementation**
- ✓ **Towards a data-driven policy: follow-up & spin-off projects**

Street counts in Athens: Why & How?

{before}

How many homeless people are there currently in Athens?



7.720



15.000



8.000 – 9.000



479

{before}

?????????



Discrepancies in both methodology and results



NO official & unified data collection strategy able to inform policy design

Yet

Consensus on:

- Use of ETHOS typology
- Clear increase trend since 2009

Concurring

understanding of basic qualitative data

{after}

1st joint pilot count in Athens

Organization Overview (1/2)

**PILOT
STREET
COUNT**

December 9th 2017 from 2am to 6am

**HISTORICAL
CENTER
AREA**

Divided in 12 Sectors

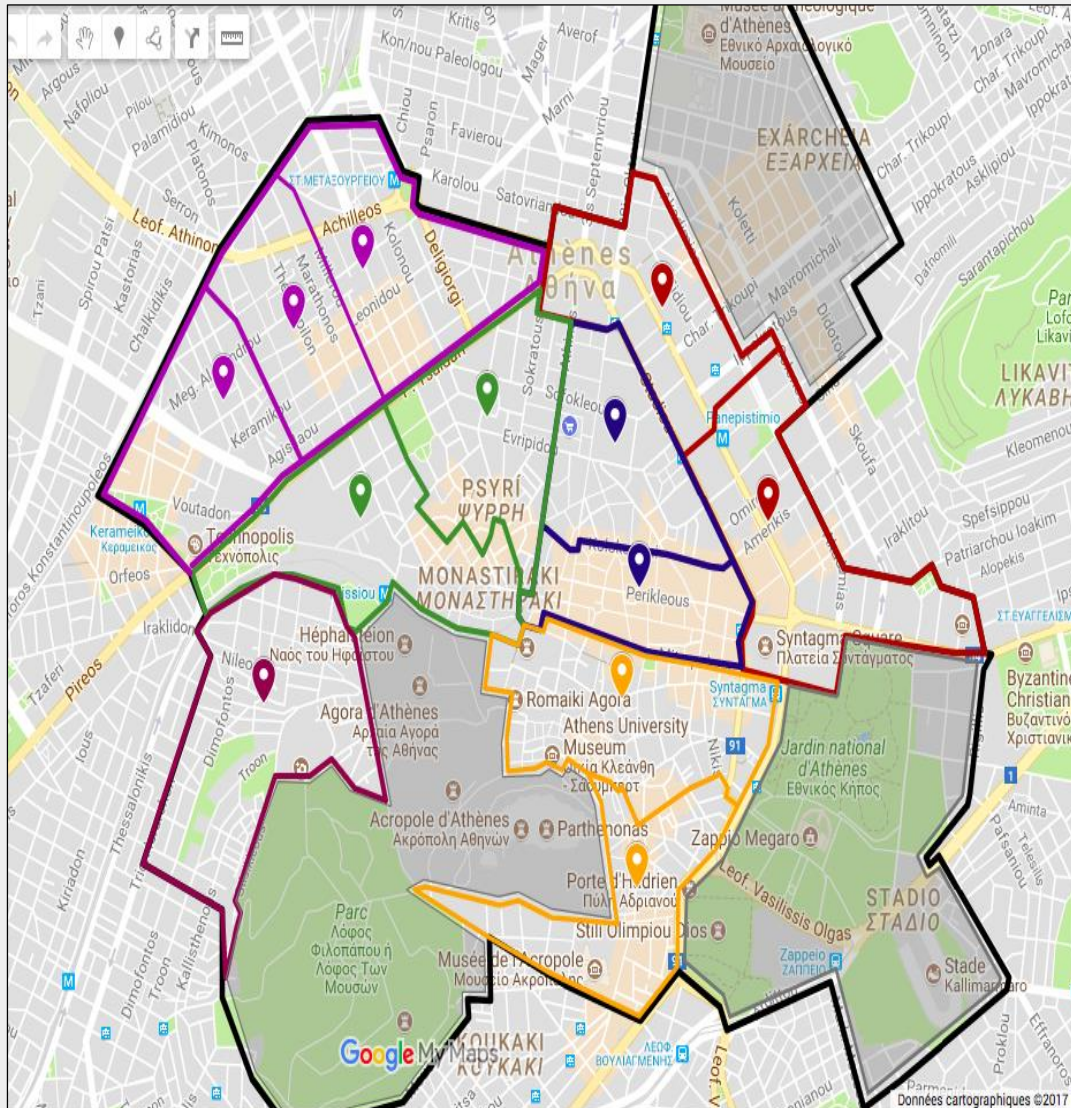
**JOINT
FORCES**

**6 partners / 70 people –
13 teams of 5 members**

Street counts in Athens: Why & How?

{after}

1st joint pilot count in Athens Organization Overview (2/2)



ΔΗΜΟΣ ΑΘΗΝΑΙΩΝ
ΚΑΤΑΓΡΑΦΗ ΑΣΤΕΓΕΩΝ 7.12.2017

ΜΗΝ ΔΙΑΒΑΣΕΤΕ ΔΥΝΑΤΑ ΟΤΙ ΕΙΝΑΙ ΜΕ ΕΛΘΔ
ΣΥΜΠΛΗΡΩΣΕΤΕ ΤΟΝ ΚΩΔΙΚΟ ΠΕΡΙΟΧΗΣ
ΑΠΑΝΤΗΣΤΕ ΟΠΩΣ ΔΗΛΩΣΤΕ ΣΤΗΝ ΕΡΩΤΗΣΗ #6

1. Ο ΑΝΘΡΩΠΟΣ ΜΠΡΟΣΤΑ ΣΑΣ:
 ΕΙΝΑΙ ΣΥΓΓΙΝΟΣ
 ΚΟΙΜΑΤΑΙ - ΠΗΓΑΙΝΕ ΣΤΗΝ ΕΡΩΤΗΣΗ #6

Κοληπέρα, ονομάζομαι και είμαι εθελοντήτρια για τον Δήμο Αθηναίων. Κάνουμε σε όλους λίγες ερωτήσεις σχετικά με την κατάσταση στεγασής τους. Οι απαντήσεις σας είναι εμπιστευτικές.

2. Μπορώ να σας κάνω λίγες ερωτήσεις;
 ΝΑΙ
 ΟΧΙ - ΠΗΓΑΙΝΕ ΣΤΗΝ ΕΡΩΤΗΣΗ #6

3. Σήμερα το βράδυ, έχετε κάποιο μέρος να μείνετε ή κάποιο μέρος όπου ζείτε;
 ΝΑΙ
 ΟΧΙ - ΠΗΓΑΙΝΕ ΣΤΗΝ ΕΡΩΤΗΣΗ #6
 ΔΕ/ΔΑ - ΠΗΓΑΙΝΕ ΣΤΗΝ ΕΡΩΤΗΣΗ #6

4. Τι είδους μέρος είναι αυτό;
 ΔΡΟΜΟΣ (ή/κ Πεζοδρόμιο, Πλατεία, Εισόδος κτιρίου)
 ΥΠΟΓΕΤΡΙΟ
 ΖΕΝΩΝΑΣ ΦΙΛΟΞΕΝΙΑΣ
 ΔΩΜΑΤΙΟ / ΔΙΑΜΕΡΙΣΜΑ / ΣΠΙΤΙ
 ΆΛΛΟ: _____

5. Σας ξαναέκαναν τις ίδιες ερωτήσεις σή μερα;
 ΝΑΙ
 ΟΧΙ

6. ΠΙΣΤΕΥΕΤΕ ΟΤΙ Ο ΑΝΘΡΩΠΟΣ ΜΠΡΟΣΤΑ ΣΑΣ ΕΙΝΑΙ ΑΣΤΕΓΟΣ;
 ΝΑΙ - ΑΝ ΕΙΝΑΙ ΣΥΓΓΙΝΟΣ, ΠΗΓΑΙΝΕ ΣΤΗΝ ΕΡΩΤΗΣΗ #7
 ΑΝ ΚΟΙΜΑΤΑΙ, ΠΗΓΑΙΝΕ ΣΤΗΝ ΕΡΩΤΗΣΗ #11
 ΟΧΙ - ΤΕΛΟΣ / ΕΥΧΑΡΙΣΤΙΕΣ

ΣΥΜΠΛΗΡΩΣΤΕ ΤΙΣ ΕΡΩΤΗΣΕΙΣ 7 - 10 ΜΟΝΟ ΕΑΝ Ο ΑΝΘΡΩΠΟΣ ΕΙΝΑΙ ΑΣΤΕΓΟΣ, ΣΥΓΓΙΝΟΣ ΚΑΙ ΕΧΕΙ ΔΕΧΘΕΙΝΑ ΑΠΑΝΤΗΣΕΙΣ ΣΕ ΕΡΩΤΗΣΕΙΣ.

7. Από πόσε είναι άστεγος/ή;
 ΚΑΤΩ ΑΠΟ ΜΗΝΑ
 1 ΜΗΝΑ - 1 ΕΤΟΣ
 ΠΑΝΩ ΑΠΟ 1 ΕΤΟΣ

ΚΩΔΙΚΟΣ ΠΕΡΙΟΧΗΣ: _____

8. Πόσο χρονών είστε;
 ΚΑΤΩ ΑΠΟ 18
 18 - 24
 25 - 30
 31 - 40
 41 - 60
 ΠΑΝΩ ΑΠΟ 60

9. Ποια είναι η υπηκοότητά σας;
 ΕΛΛΗΝΙΚΗ - ΕΥΧΑΡΙΣΤΙΕΣ ΚΑΙ ΠΗΓΑΙΝΕ ΣΤΗΝ ΕΡΩΤΗΣΗ #11
 ΆΛΛΗ ΧΩΡΑΣ ΤΗΣ ΕΕ - ΕΥΧΑΡΙΣΤΙΕΣ ΚΑΙ ΠΗΓΑΙΝΕ ΣΤΗΝ ΕΡΩΤΗΣΗ #11
 ΆΛΛΗ ΧΩΡΑΣ ΕΚΤΟΣ ΕΕ - ΠΗΓΑΙΝΕ ΣΤΗΝ ΕΡΩΤΗΣΗ #10

10. Ποια είναι τα καθεύκτα παραμονής σας στη χώρα;
 ΕΧΩ ΑΔΕΙΑ ΠΑΡΑΜΟΝΗΣ
 ΕΙΧΑ ΑΔΕΙΑ ΠΑΡΑΜΟΝΗΣ ΑΛΛΑ ΕΧΕΙ ΛΗΞΕΙ
 ΔΕΝ ΕΧΩ ΚΑΤΑΔΕΝ ΕΙΧΑ ΠΟΤΕ ΑΔΕΙΑ ΠΑΡΑΜΟΝΗΣ
 ΑΛΛΑΔ: _____

ΕΥΧΑΡΙΣΤΙΕΣ: Ευχαριστούμε για τη συμμετοχή σας. Υπευθύνουμε ότι οι απαντήσεις που δώσατε είναι εμπιστευτικές. Καλή τύχη σας.

ΧΩΡΙΣ ΝΑ ΤΙΣ ΔΙΑΒΑΣΕΤΕ ΔΥΝΑΤΑ ΣΥΜΠΛΗΡΩΣΤΕ ΤΙΣ ΕΡΩΤΗΣΕΙΣ 11-16 ΣΕ ΟΛΕΣ ΤΙΣ ΠΕΡΙΠΤΩΣΕΙΣ ΠΟΥ Ο ΑΝΘΡΩΠΟΣ ΕΙΝΑΙ ΑΣΤΕΓΟΣ

11. ΦΥΛΟ:
 ΑΝΔΡΑΣ
 ΓΥΝΑΙΚΑ
 ΔΥΣΚΟΛΟ ΝΑ ΔΙΕΥΚΡΙΝΙΣΤΕΙ

12. ΕΞΑΡΤΗΣΕΙΣ:
 ΟΧΙ
 ΕΞΑΡΤΗΣΗ ΑΠΟ ΑΛΚΟΟΛΑ
 ΕΞΑΡΤΗΣΗ ΑΠΟ ΝΑΡΚΩΤΙΚΑ
 ΕΞΑΡΤΗΣΗ ΚΑΙ ΑΠΟ ΤΑ ΔΥΟ
 ΔΥΣΚΟΛΟ ΝΑ ΔΙΕΥΚΡΙΝΙΣΤΕΙ

13. ΨΥΧΙΚΗ ΝΟΣΟΣ
 ΝΑΙ
 ΟΧΙ
 ΔΥΣΚΟΛΟ ΝΑ ΔΙΕΥΚΡΙΝΙΣΤΕΙ

14. ΤΟΠΟΘΕΣΙΑ: _____

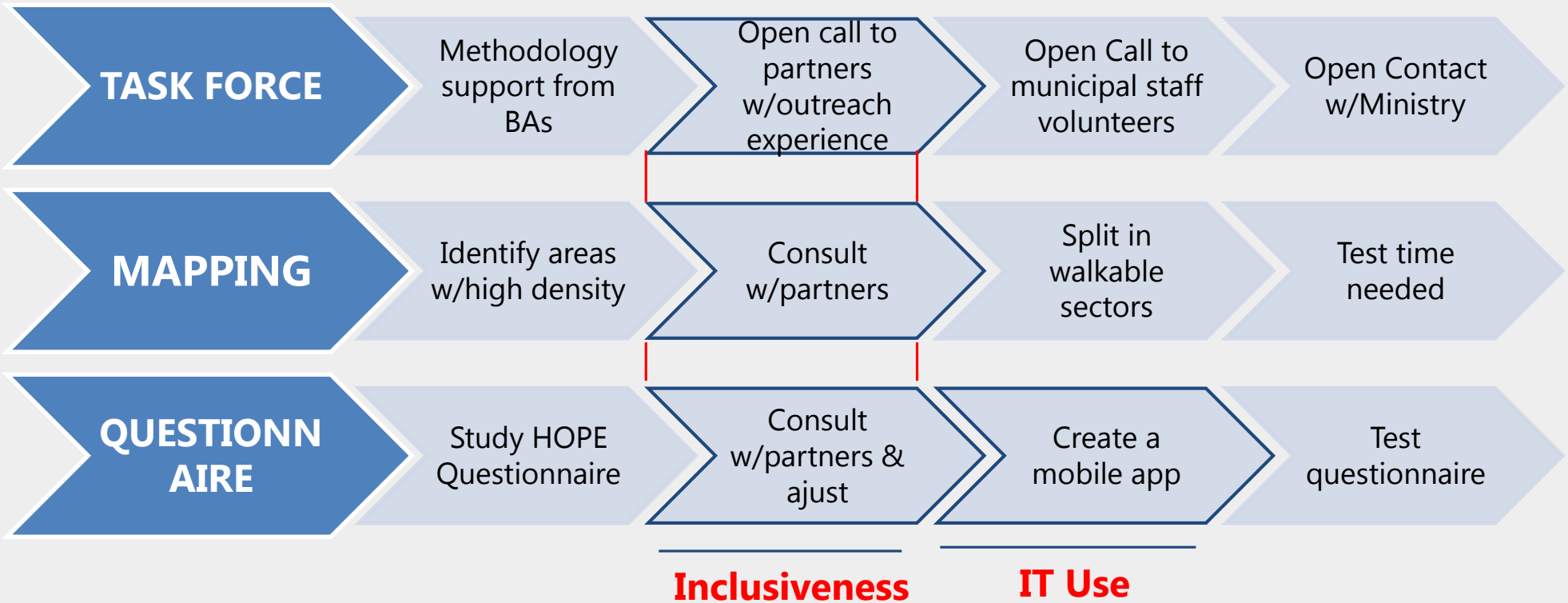
15. ΧΡΟΝΟΣ ΘΑΛΑΚΗΡΩΣΗΣ: _____

16. ΑΡΧΙΚΑ ΑΠΟΓΡΑΦΟΝΤΟΣ: _____

Street counts in Athens: Why & How?

{after}

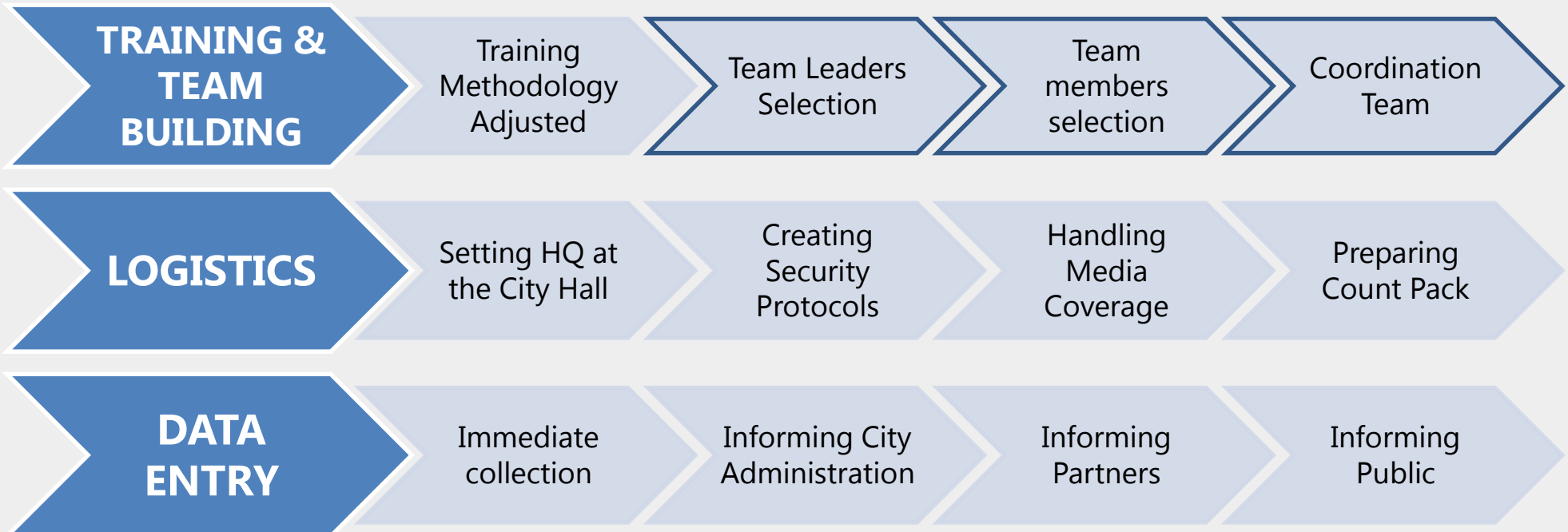
1st joint pilot count in Athens Implementation Steps (1/3)



{after}

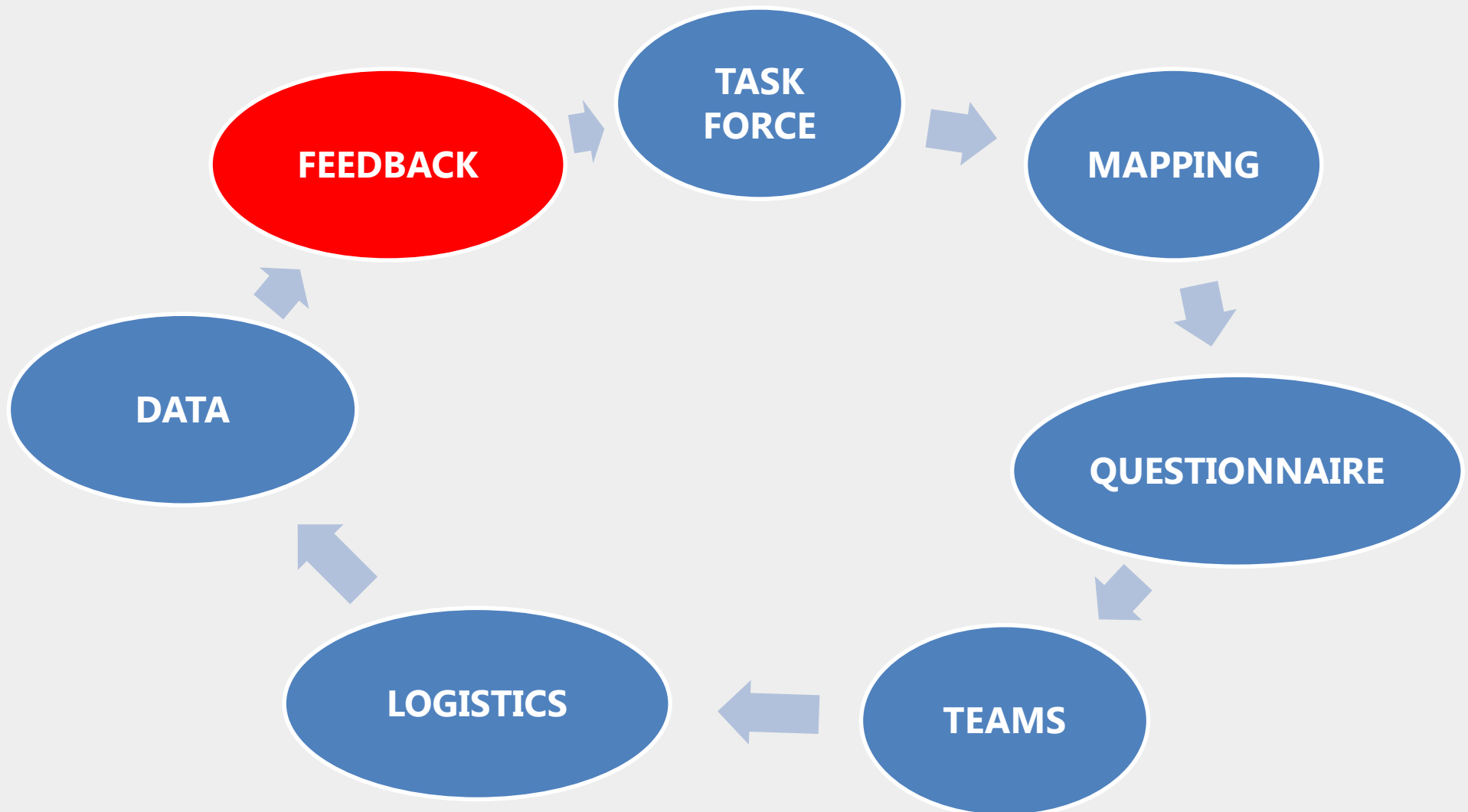
1st joint pilot count in Athens Implementation Steps (2/3)

"Mixed Teams" Creation



{after}

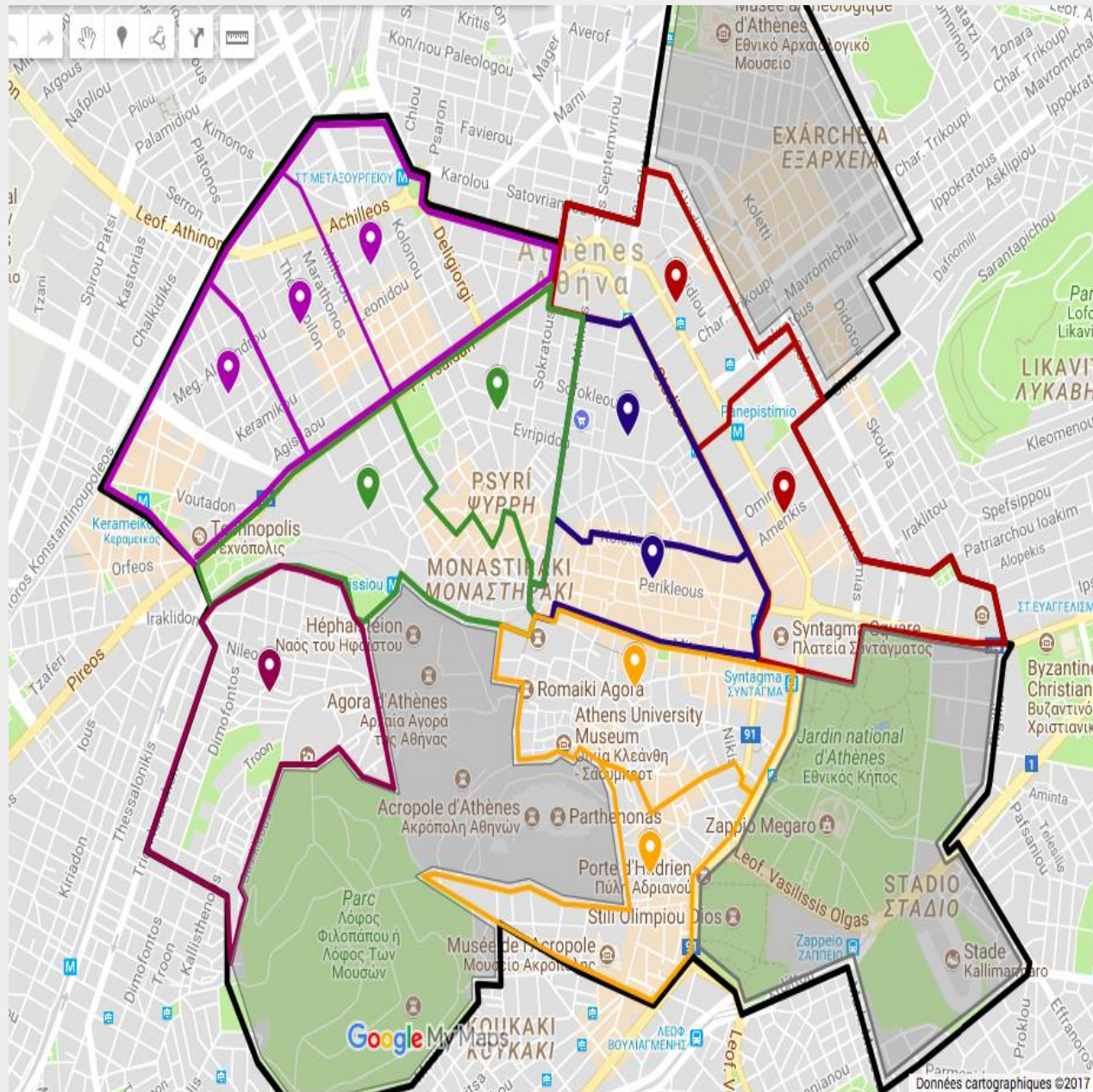
1st joint pilot count in Athens Implementation Steps (3/3)





- ✓ **Street counts in Athens: Why & How?**
- ✓ **Results: revisiting our perception on urban homelessness**
- ✓ **Lessons learned & pathways to implementation**
- ✓ **Towards a data-driven policy: follow-up & spin-off projects**

Results: revisiting our perception on urban homelessness



SECTOR	HOMELESS
1	7
2	10
3	17
4	29
5	32
6	21
7	27
8	16
9	17
10	7
11	1
12	3
TOTAL	187

Results: revisiting our perception on urban homelessness

DO YOU BELIEVE THAT THIS PERSON IS HOMELESS?	Yes & He/She is awake	54
	Yes & He/She is asleep	133
Since when do you live on the street?	1 month - 1 year	16
	Less than 1 month	7
	More than 1 year	26
What is your citizenship?	3rd Non-EU Country	26
	Other EU Country	6
	Greek	17
Addictions	Unclear	103
	Alcohol Addiction	8
	Drug Addiction	49
	Addiction to Drugs & Alcohol	3
	No addiction	24
Gender	Man	124
	Woman	22
	Unclear	41
Mental condition	Unclear	154
	Yes	5
	No	28



- Total number of rough sleepers: 187. Below estimations, but can be explained.
- 2/3 men, ~1/2 substance users. Concurring to estimations.
- Out of 1/3 awake: 50% sleeping roughly for more than a year, 50% originating from a 3rd non-EU country.

Interim conclusion:

Relatively low number of rough sleepers, yet with a high resiliency degree, due to inherent characteristics & general socio-economic conditions.

Ministry of Labor City count (May 2018)

- Similar methodology applied to Athens and 6 more cities
- Count Area: extended to 40 sectors (X3 when compared to the pilot)
- Results:

	Historical Center Area	Total Street Homeless	Night Shelters	Supported Apartments	TOTAL
City-Wide Count	138	353	233	207	793
Pilot Count	187				



- ✓ **Street counts in Athens: Why & How?**
- ✓ **Results: revisiting our perception on urban homelessness**
- ✓ **Lessons learned & pathways to implementation**
- ✓ **Towards a data-driven policy: follow-up & spin-off projects**

TASK FORCE

- Create a permanent management team, linked to City administration
- Give more time to the open call

MAPPING

- Rearrange some of the Sectors
- Include “high-risk” areas within the Historical Center
- Decide on whether to match the city-wide count area

QUESTIONNAIRE

- Keep 1-p format
- Rearrange some of the questions (e.g mental condition)
- Insert question on reasons of service-resistance

Lessons learned & pathways to implementation

TEAMS

- Keep mixed composition
 - Narrow down team size to 3 members
- Be more inclusive (expand university students participation, citizens as volunteers?, create volunteer contract)
 - Create specific teams for “high-risk” areas

LOGISTICS

- Give more time to:
- Security protocols creation
 - Media coverage handling

DATA

- Keep the mobile-app (securing its interoperability with both i-phones & androids)
 - Assign data visualization & process

FEEDBACK

- Create “formal” feedback procedures
- Link feedback to policy adjustment & development

LOCAL & CENTRAL GOVERNMENT COORDINATION

1. Unify methodology:

- Common count area
- Common count questionnaire
- Keep simultaneous shelter count
- Keep “risk-areas” count

2. Decide on count identity & frequency:

- Quantitative vs. Qualitative
- Once or twice/year?

3. Secure public commitment to a mutually designed policy:

- Set goals for shelter & rough sleepers / Ensure human & funding resources
- Link homelessness to housing policy/Create an overall realistic policy
- Allocate responsibilities/accountability



- ✓ **Street counts in Athens: Why & How?**
- ✓ **Results: revisiting our perception on urban homelessness**
- ✓ **Lessons learned & pathways to implementation**
- ✓ **Towards a data-driven policy: follow-up & spin-off projects**

Interim conclusion:

Relatively low number of rough sleepers,
yet with a high resiliency degree,
due to inherent characteristics & general
socio-economic conditions.

Policy Follow-Up

National Strategy on Homelessness:

- Reform of the legislative framework (including homelessness definition)
- New interministerial committee on homelessness
- Homelessness monitoring mechanism
- Better access to subsidies

Spin-off projects

1. Safe Haven project:

- 24/7 operating unit, combining night shelter & day care services
- Low threshold based on the “bed-first” principle
- Targeting the most vulnerable/excluded rough sleepers
- Large spectrum of tailor-made medical & social services
- Joint venture of City of Athens & Partners
- Average duration of stay: 1 year
- Expected outcome: 200 people/2 years

Spin-off projects

2. Night Shelter for active drug users:

- Operated by the publicly supervised entity specialized in drug addiction
- 90 places
- Project duration: 2 years
- Low threshold
- Combination of medical & social services



Thank you!