

---

**Platforma  
pro sociální  
bydlení**



Evropská unie  
Evropský sociální fond  
Operační program Zaměstnanost



**OSTRAVSKÁ UNIVERZITA**  
FAKULTA SOCIÁLNÍCH STUDIÍ

# „Randomized Controlled Trial of Housing First for Families in Brno“

Štěpán Ripka, Ph. D.

Platform for Social Housing and University of Ostrava  
FEANTSA Research Conference; 21th of September 2018

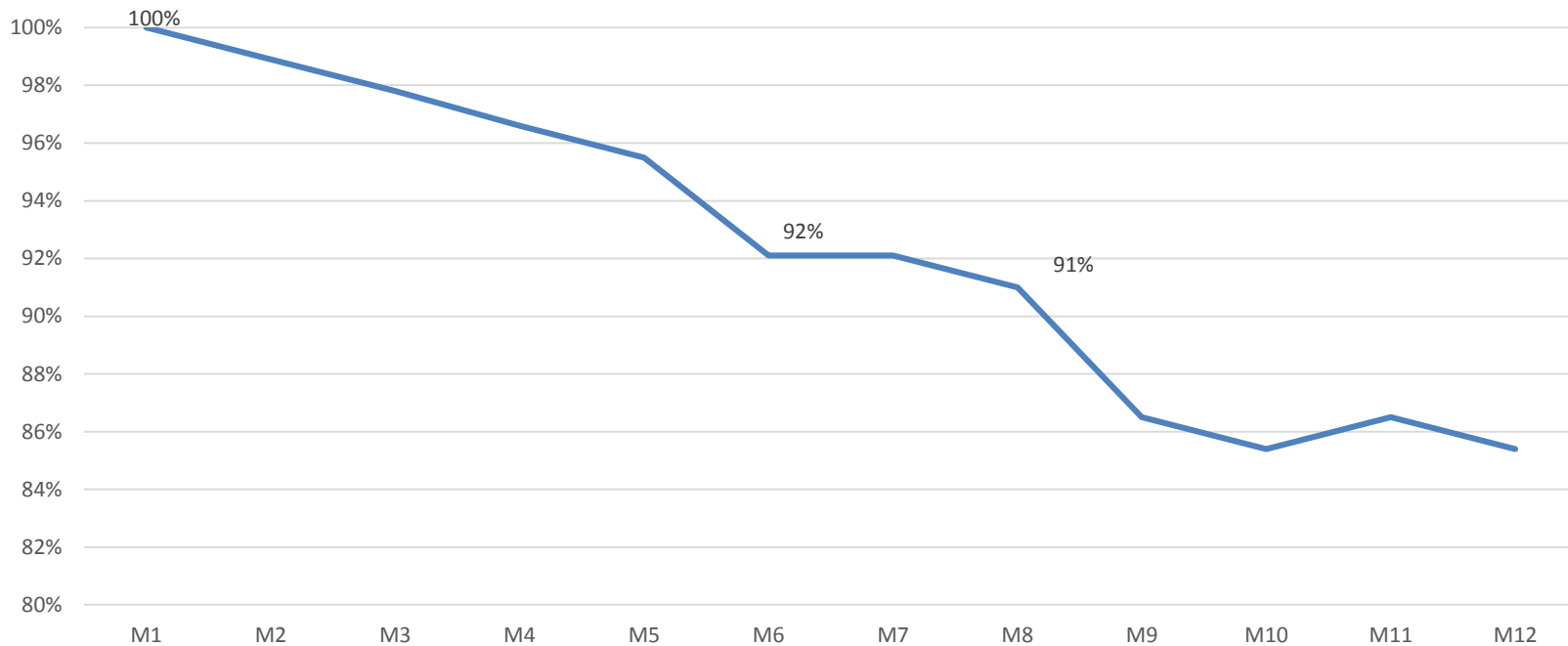
# Structure of presentation

- Family homelessness in Brno
- Trial design and protocol
- Expected outcomes
- Results
- Next steps in ending family homelessness

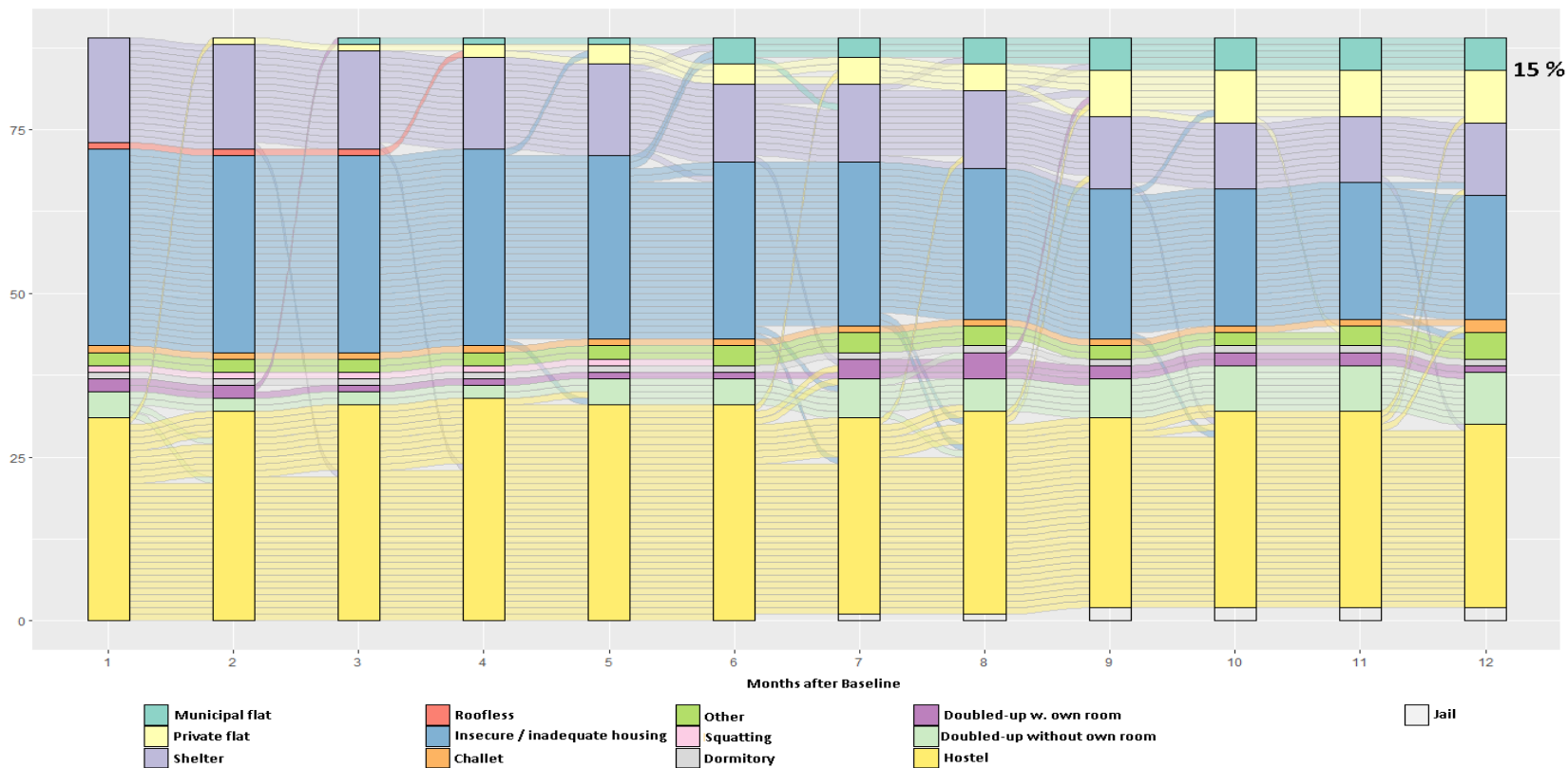
# Family homelessness in Brno

- Regional capital of Moravia, population 400 000
- 29 000 municipal flats (2018) – 1200 unoccupied flats (2018)
- **421 homeless families in Brno** (RW Brno, 2016)
  - 191 in hostels, 64 in shelters, others in overcrowded households, without basic facilities, couchsurfing or doubled-up,
  - Inflow of ca 50 new homeless families each year
- 2/3 single-headed, 2/3 Roma, mothers avg 35 yo, 6 yrs homeless on average. 2,8 children/family, 20% children disabled or ill, 9% children in institutional care. 60% on parental leave, 20% working, 45% cannot control debt.

# Rate of homelessness among the control group, N = 90



# Control group residential dynamics



## **Challenge: finding solution to family homelessness**

- Traditional approach (staircase model) works for approx. 10-20% of homeless families (cherry-picking)
- Housing retention rate of traditional approach not known



- Development and testing of a new approach:
  - reaching all including the most vulnerable;
  - seeking highest housing retention rate possible (lowest returns to homelessness).

# Housing First in Brno

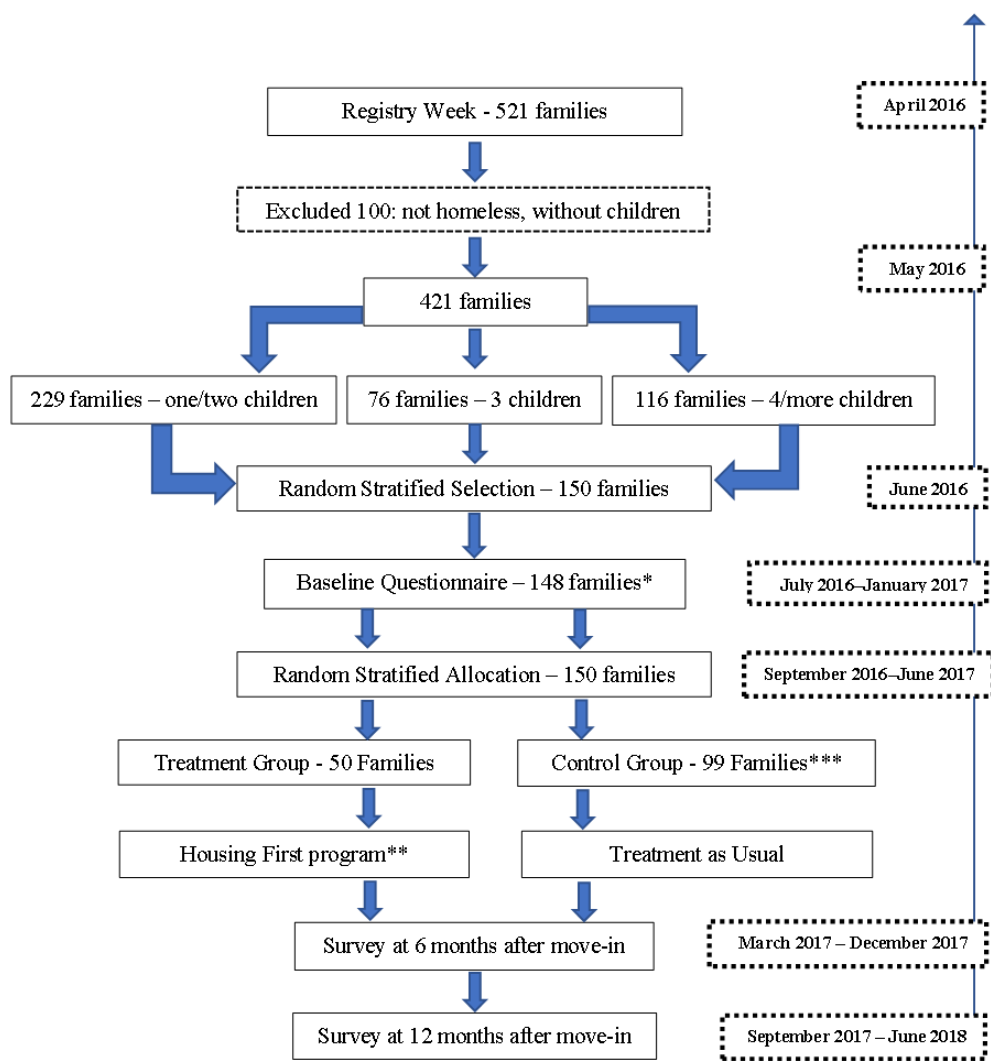
**Target:** To end homelessness of 50 families in the city of Brno.

**Intervention:** Municipal flat + ICM + housing allowance (direct payment)

**Activities:**

- Family homelessness census (Registry week) + lottery of 150 families
- Training of social workers in Housing first approach
- Housing 50 families
- Complex social work
- Political and Expert Platform
- Randomised controlled trial (+ Scientific Board)

# Participant timeline





# Expected Primary Outcomes

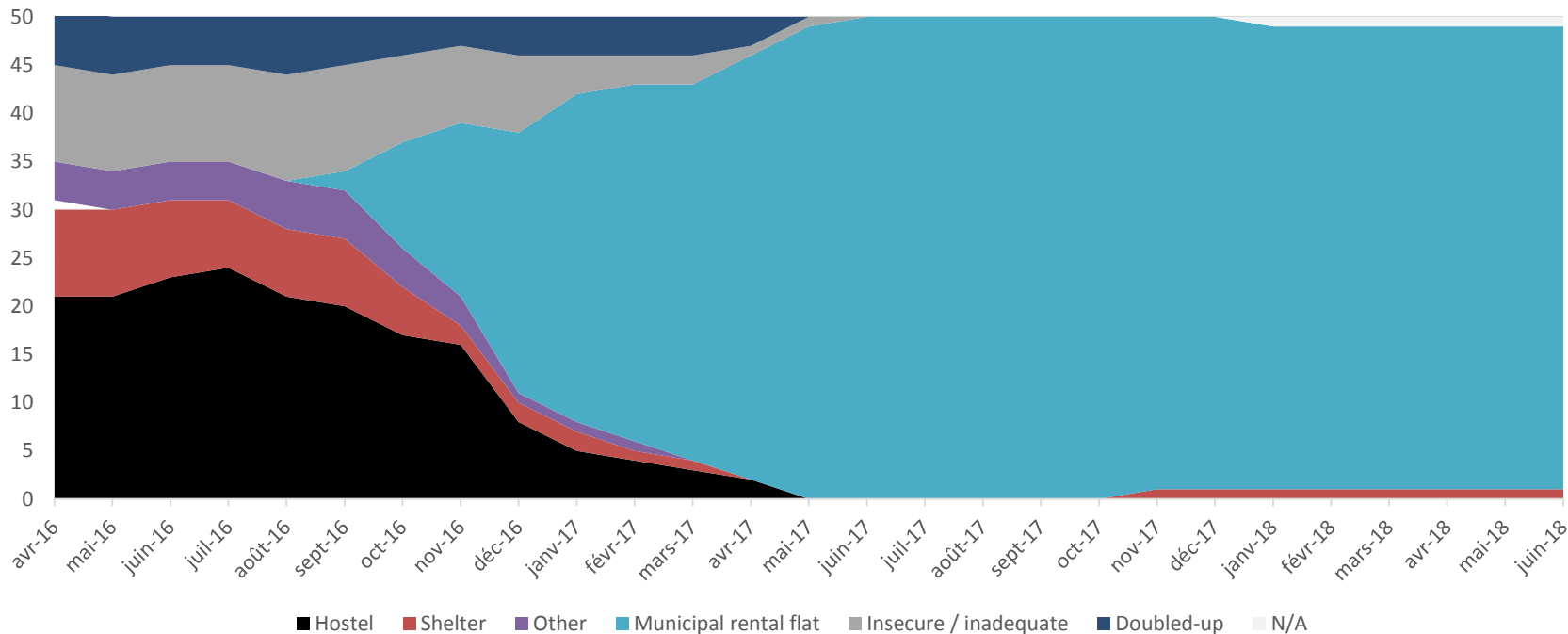
	Outcome	Indicator	Measure
Primary outcomes	Decrease in time the family spent homeless	Number of months the family was homeless (according to ETHOS)	6-month survey: Evidence on places where the family lived last six months by month  12-month survey: Evidence of all places where the family lived by month since 05/2016
	Improvement in security of tenure	Subjective assessment of security of tenure	Answers to: „Do you think you will be able to stay here as long as you <u>wish?</u> “ measured at 0, 6 and 12 months
	Improvement of mental health of mothers	Level of psychosocial distress	K-6 psychosocial distress scale measure at 0, 6 and 12 months.
	Decrease in the use of emergency health services	Number of uses of emergency health service	Number of uses of emergency health services of all family members in last six months, measured at 0, 6 and 12 months.



## **Expected Secondary Outcomes**

- Housing quality
- Improvement in health and quality of life of families
- Improvement in social integration of parents
- Improvement in financial stability of families
- Reunification of families and prevention of institutionalization of children
- Improved school attendance of children

# Treatment group move-in, N = 50



## **12-months Impacts: Primary Outcomes**

Housing **retention rate was 96%**, i. e. 48 out of 50 families remained housed after one year (prolonged tenancy agreement)



## 12-months Impacts: Primary Outcomes

Indicator	Scale	Treatment Average	Control Average	Average Treatment Effect	P-value
Security of tenancy	Yes/No	0,91	0,43	<b>+ 0,48</b>	<0,0001
Psychosocial stress	High stress level (K6 > 13 = SMI)	0,10	0,45	<b>- 0,35</b>	0,0003
Emergency visits	Total visits/ family/ 12months	2,00	4,13	<b>- 2,13</b>	0,025
Used ambulance	Total ambulance uses/ family/ 12M	0,29	1,32	<b>- 1,03</b>	0,008
Hospital stays	Total hospital stays/ family/ 12M	0,37	1,15	<b>- 0,78</b>	0,006

## Secondary outcomes

Outcome	Indicator	effect
Stability of housing	Number of moves in 6 months	--
Quality of housing	Occurrence of problems connected to poor housing	--
	Subjective assessment of housing quality	++
Improvement in health and quality of life of families	Subjective health assessment of parents	++
	Subjective health assessment of children	0
	Occurrence of asthma, injuries and respiratory problems of children	0 (asthma) 0 (injuries) + (respiration)
	Life satisfaction of mothers	++
Improvement in social integration of parents	Level of anomia	--
	Participation in community gatherings	0

## Secondary outcomes

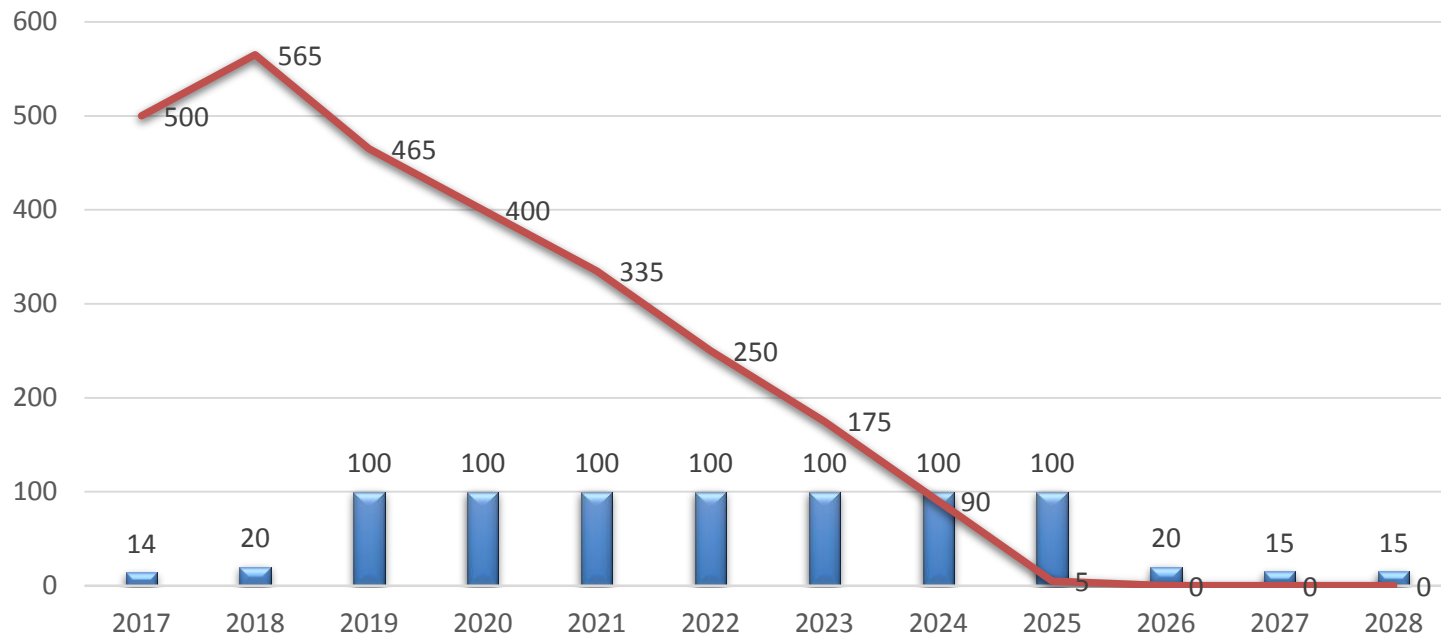
Outcome	Indicator	effect
Improvement in financial stability of families	Amount of money the family lacks to cover basic goods and services	0
	Number of days in month the family disposes cash	0
Reunification of families and prevention of institutionalization of children	Number of children living in foster care / institutional care	- (13,5 % vs 5,9 %)
Improved school attendance of children	Absenteeism of school children	N/A

## **What is next in Brno?**

- Action Plan to end Family Homelessness in Brno 2018-2025 (for city council approval in September 2018)
  - Integrated System for Ending Family Homelessness in the city
  - Robust diversion and prevention
  - Ensure available housing stock
  - Ensure available case management and support services
  - Management (eradication) of temporary hostels – ending poverty bussiness
  - Up-to date date and evaluation of system performance
  - PR and communication



# Ending Family Homelessness in Brno 2018-2025



# What is next in the CR?

- ESF call on Housing first projects – scaling up Brno experience
  - Opens Dec. 2018 through mid 2021
  - Allocation ca 6mil EUR
  - 60 % : 40 % financial scheme (personal costs + 40 % lump sum) will finance all support incl. peer support and specialized services, training of staff, move-in costs incl. deposit, risk funds, equipment,...
  - Expected impact: 500 – 750 households in 30 – 50 HF projects
  - Evaluation
- Obligatory criteria
  - Complex needs target group
  - Standard lease for 12 months, no special lease requirements
  - Support for at least 12 months
  - Lack of cooperation with support service must not itself affect lease
  - Housing stock management and support must be separated

---

# Platforma pro sociální bydlení

## CONTACTS

Štěpán Ripka  
Platform fo Social Housing

Janovského 29  
170 00 Praha 7  
Czech Republic

e-mail:  
[stepan.ripka@socialnibydeni.org](mailto:stepan.ripka@socialnibydeni.org)