



HOMELESS WOMEN IN HUNGARY

FEHÉR, Boróka (BMSZKI)
KOVÁCS, Ivetta (Menhely)



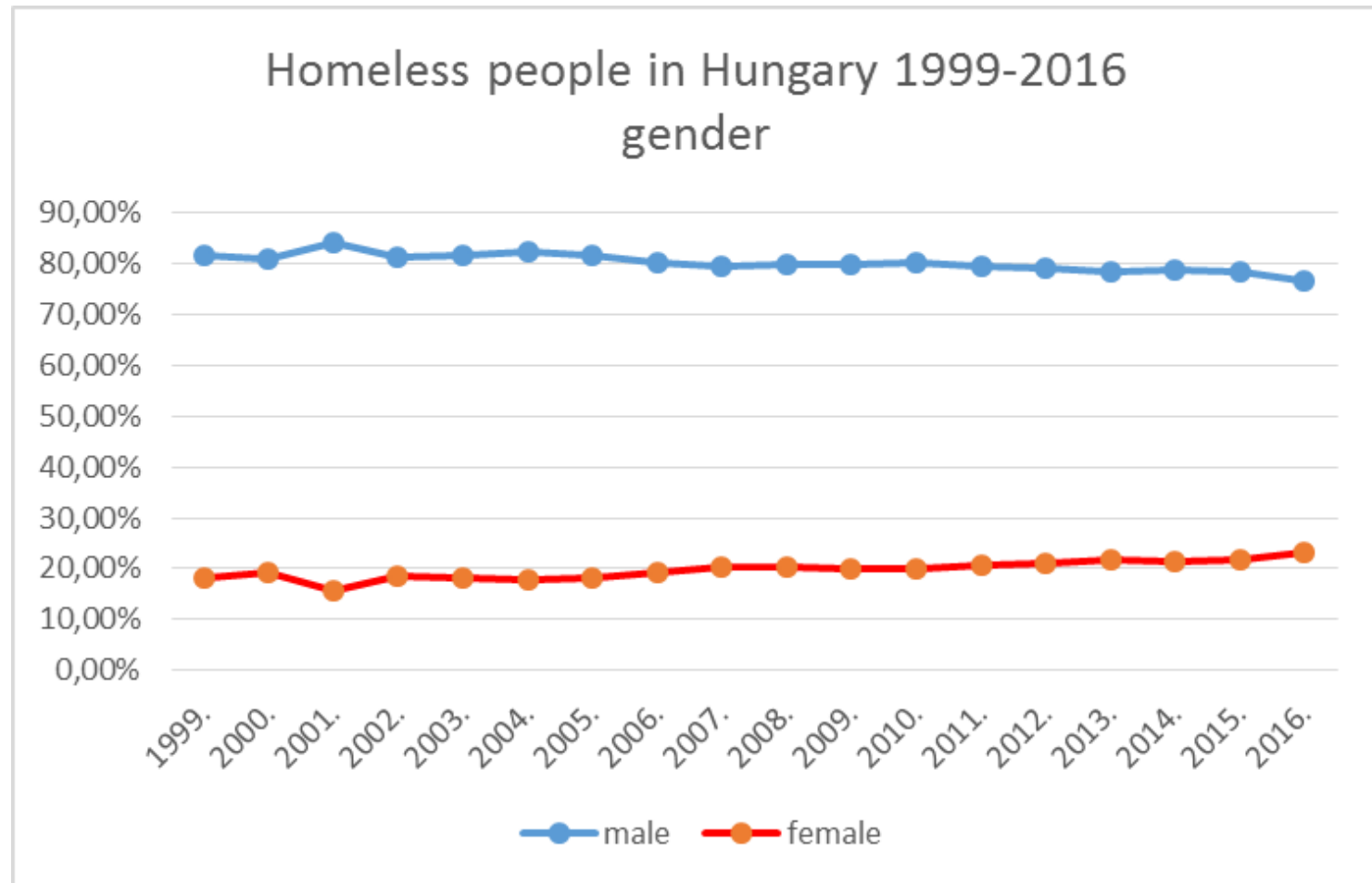
SOURCE OF DATA

* February 3rd national survey 2016

(<https://www.bmszki.hu/hu/februar-harmadika-munkacsoport/eves-adatfelvetelek>)

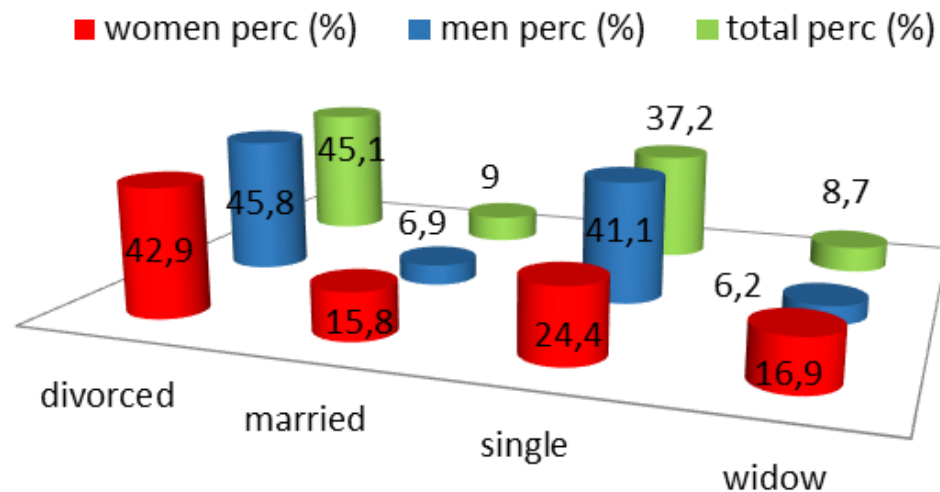
* Needs assessment among women using BMSZKI services

I. DATA FROM THE FEBRUARY 3RD NATIONAL SURVEY

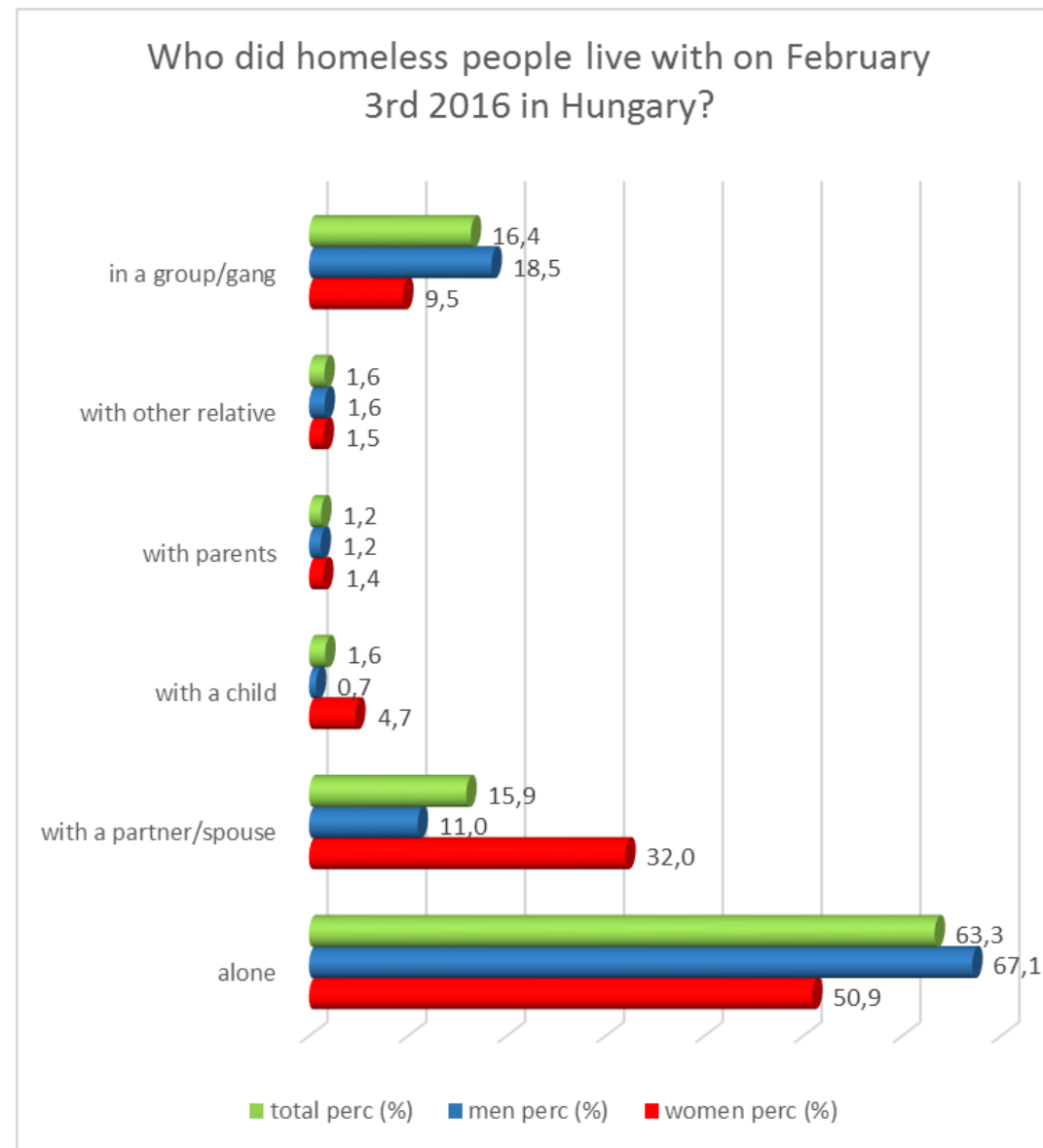


FAMILY TIES – MARITAL STATUS

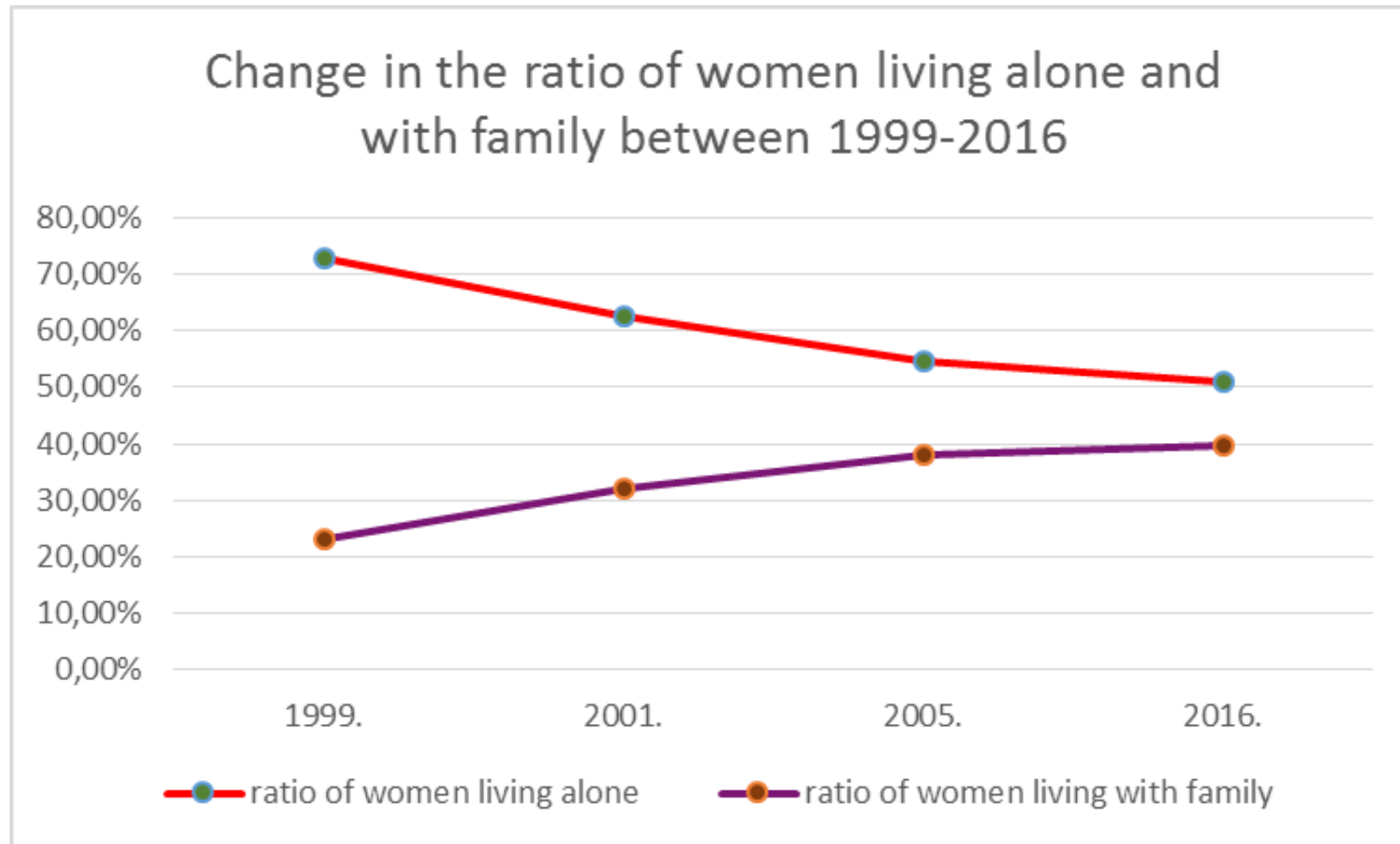
Marital status of homeless women and men on February 3rd, 2016



FAMILY TIES — WHO DID WOMEN LIVE WITH?

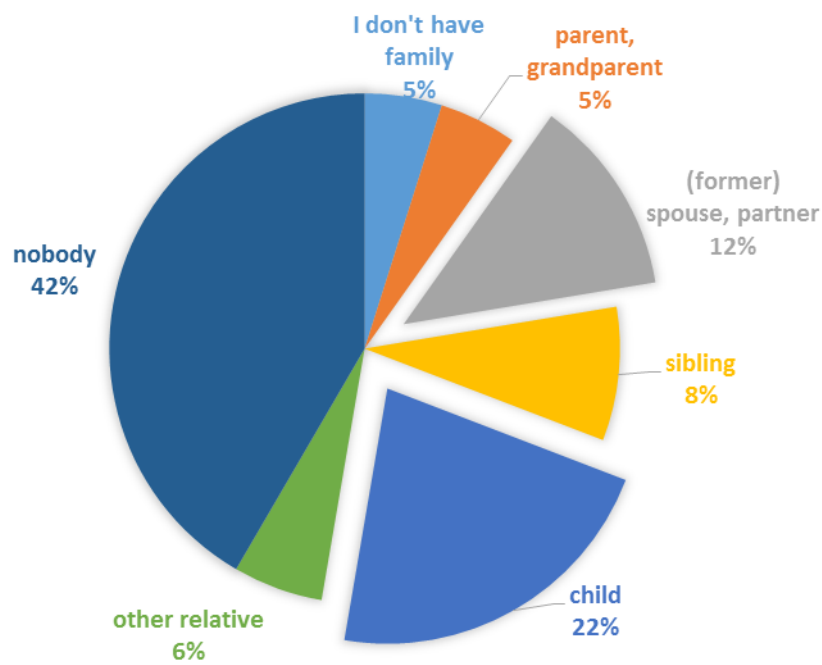


FAMILY TIES — ALONE OR WITH FAMILY?

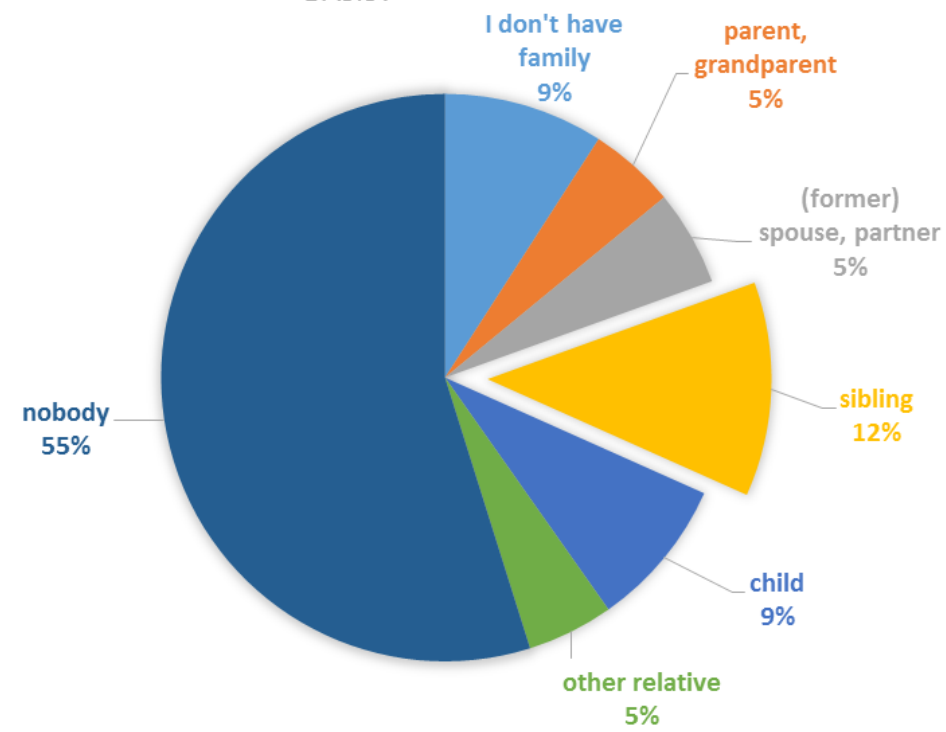


FAMILY TIES - CONTACT

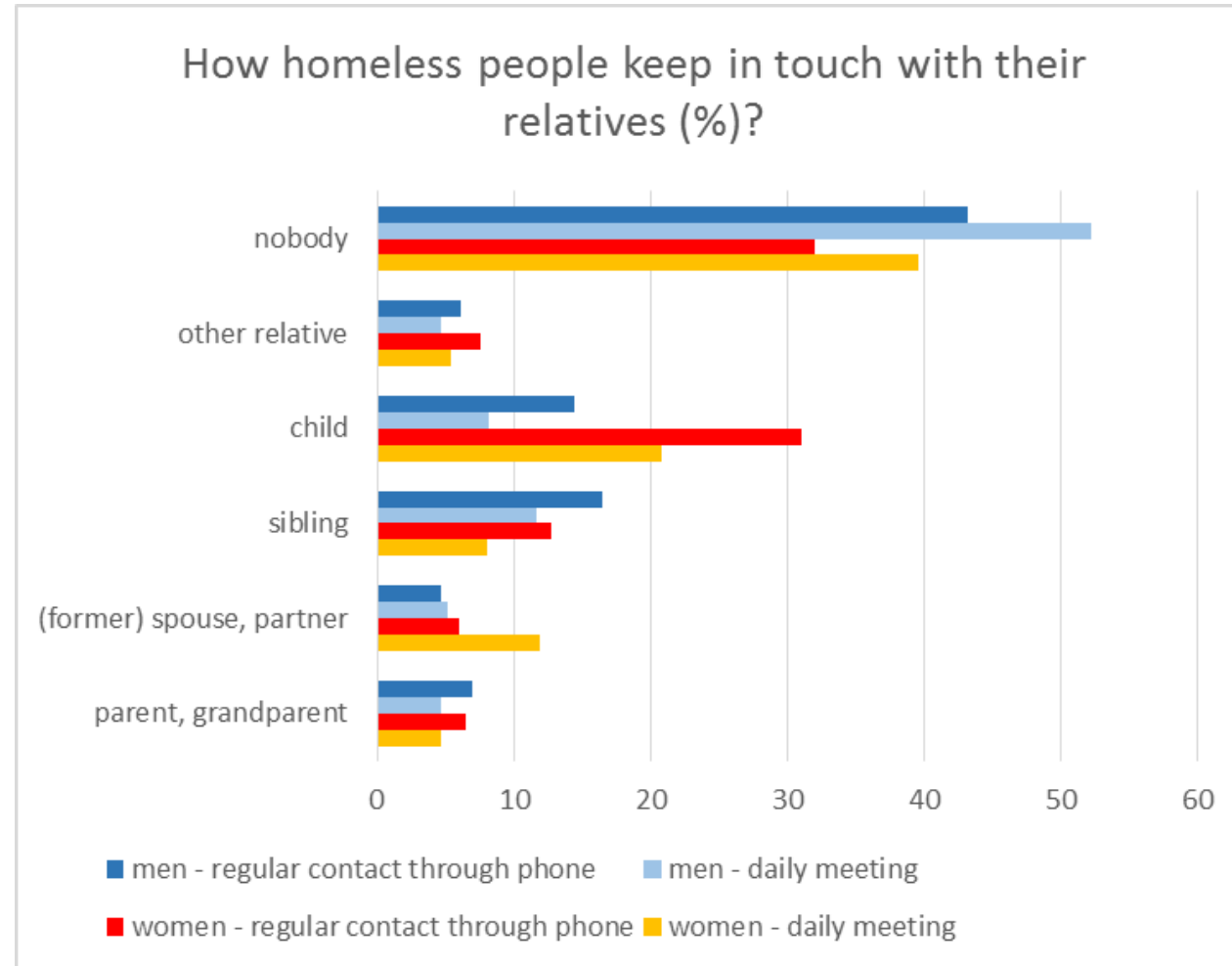
WHICH RELATIVE DO HOMELESS WOMEN MEET ON A DAILY BASIS?



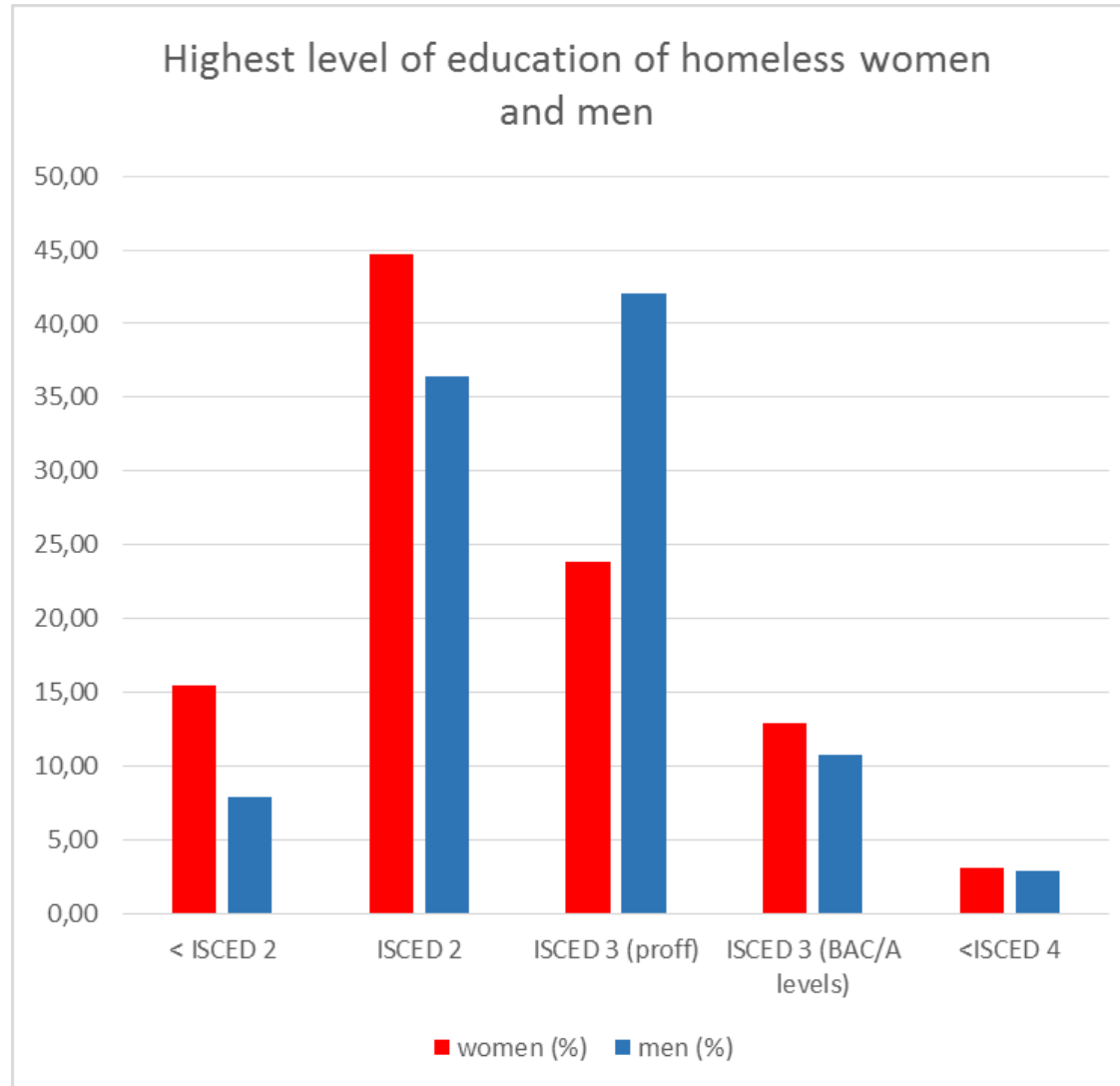
WHICH RELATIVE DO HOMELESS MEN MEET ON A DAILY BASIS?



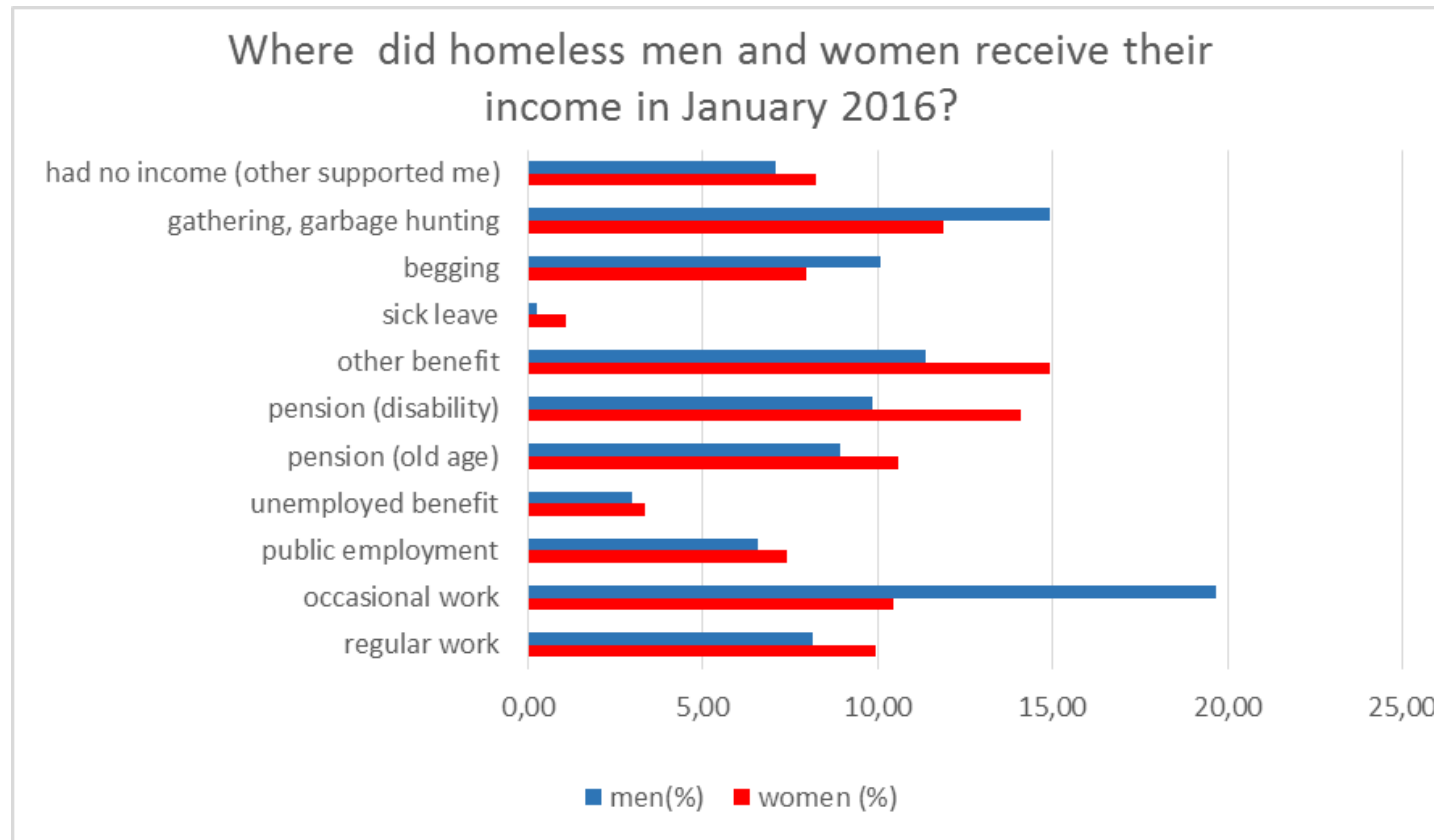
FAMILY TIES - COMPARISON



EDUCATION



INCOME



II. DATA FROM THE NEEDS ASSESSMENT OF BMSZKI FEMALE SERVICE USERS

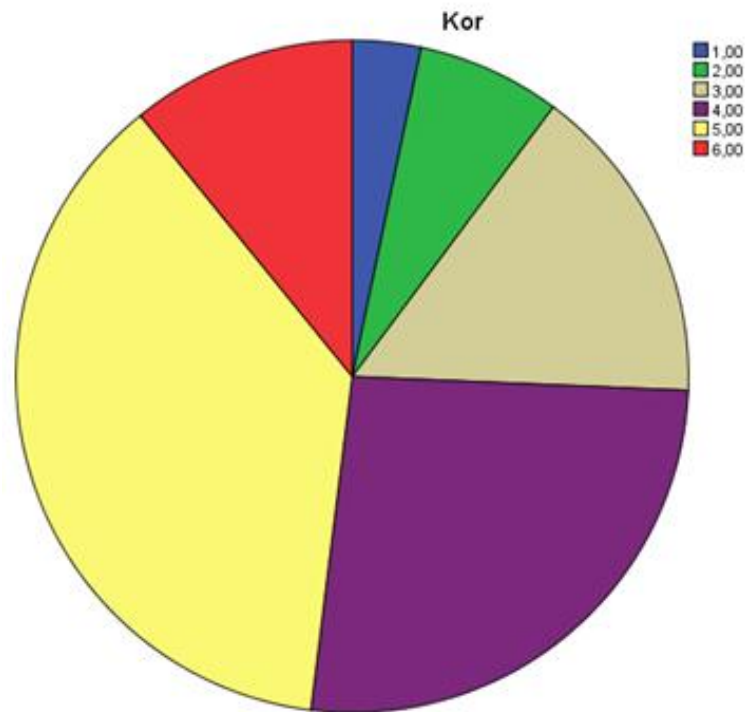
N=304; survey in April + July – August 2018

Women

- using day centres (and sleeping rough) (19)
- sleeping at emergency shelters (156)
- sleeping at hostels (129)

577 women using our night services in the first week of August

AGE DISTRIBUTION OF WOMEN

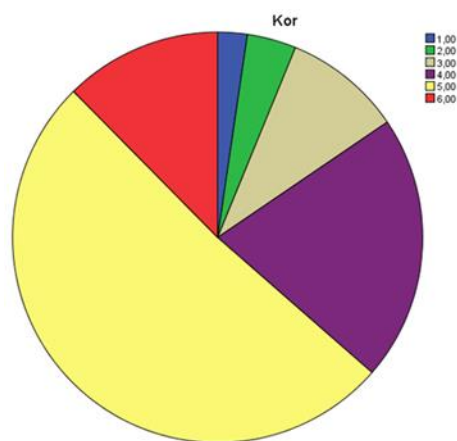


1	25-
2	26-35
3	36-45
4	46-55
5	56-65
6	65+

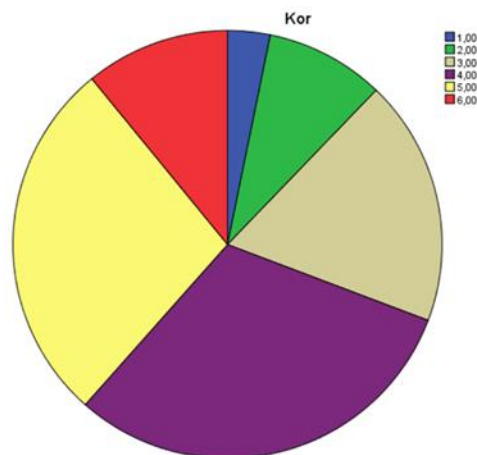
AGE DISTRIBUTION BY SERVICES

1	25-
2	26-35
3	36-45
4	46-55
5	56-65
6	65+

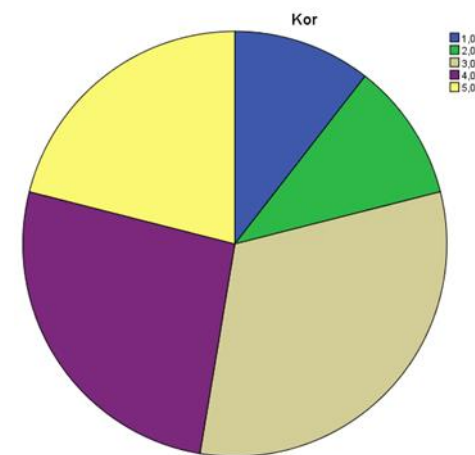
Hostels



Emergency shelters



Sleeping rough



„WHAT DO YOU THINK ARE THE THREE BIGGEST PROBLEMS OF THE WOMEN WHO SLEEP HERE THAT STAFF SHOULD WORK ON?“

1. Cleanliness (100 people)
2. Personal conflicts between women (74)
3. Physical conditions at the service (46)
4. Housing (41)
5. Addiction (37)
6. Mental health (35)

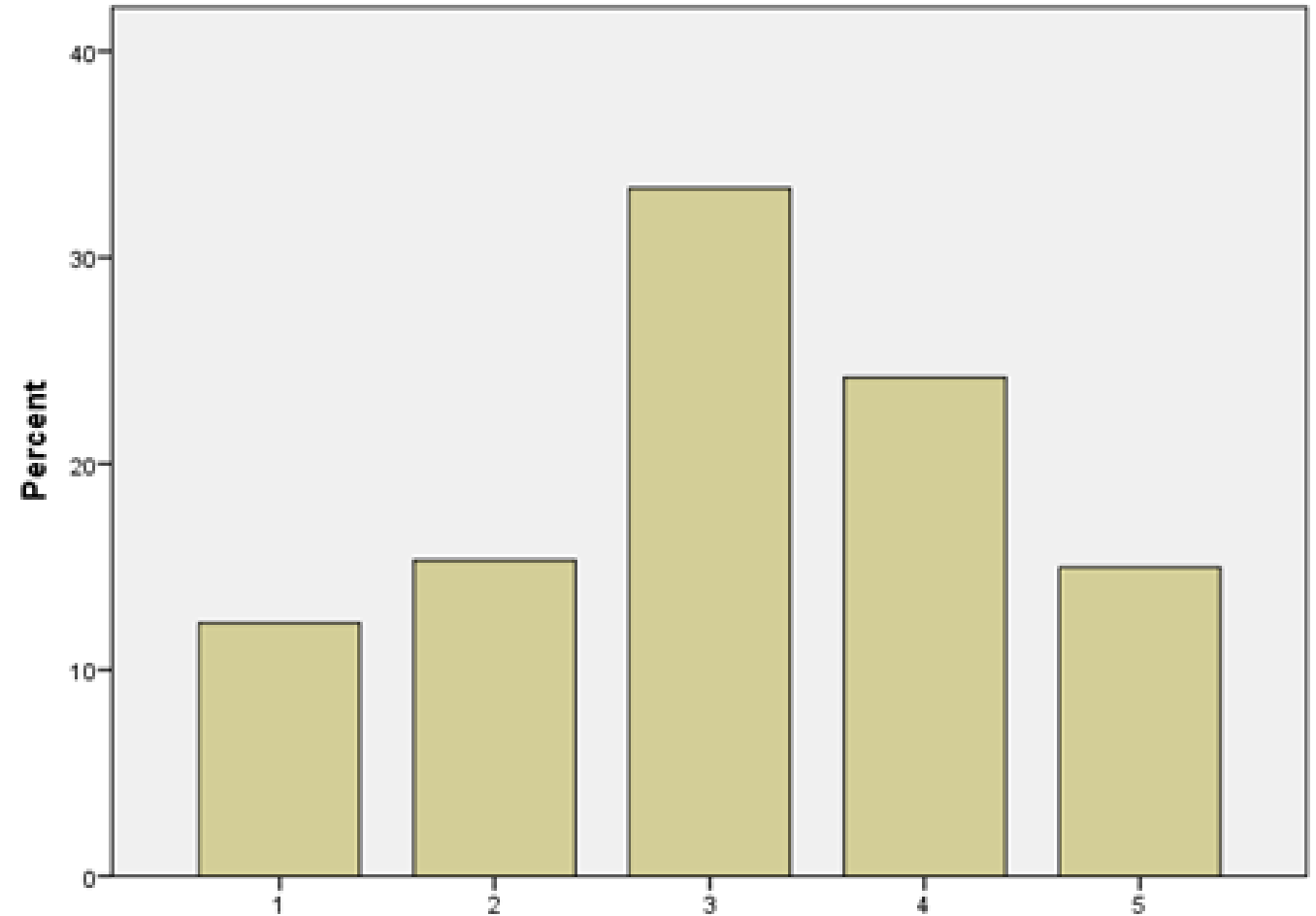
...

Intimate relationships, family issues (26), security, men (24), boredom, loneliness (24)
stealing (24), lack of jobs (18), health (16)

PHYSICAL HEALTH

1 Very bad
...
5 Excellent

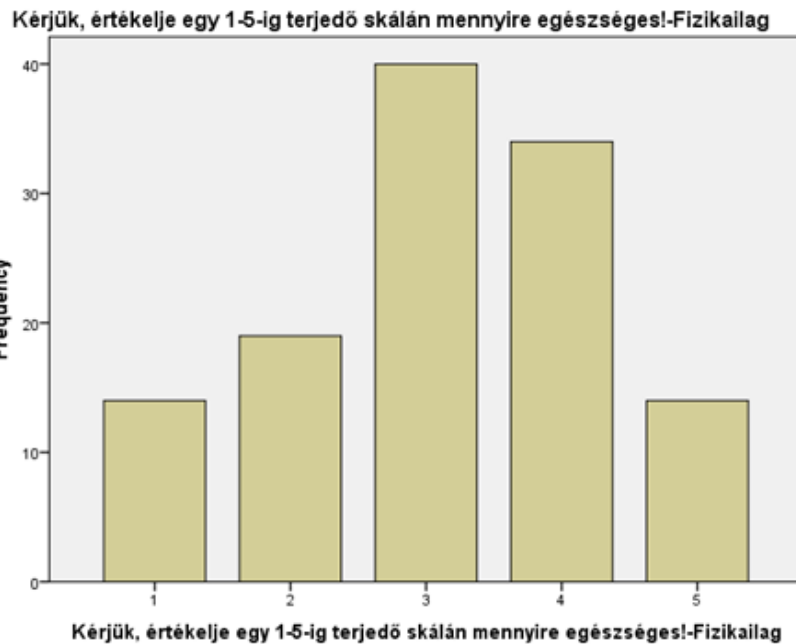
Kérjük, értékelje egy 1-5-ig terjedő skálán mennyire egészséges!-Fizikailag



Kérjük, értékelje egy 1-5-ig terjedő skálán mennyire egészséges!-Fizikailag

PHYSICAL HEALTH

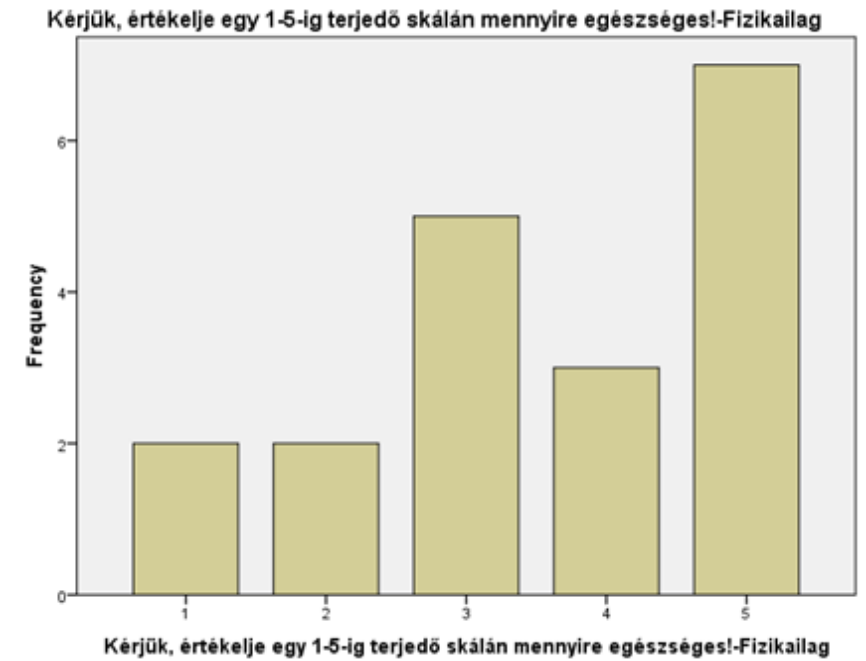
Hostels



Emergency shelters



Rough sleepers



PHYSICAL HEALTH

- Have you had a **health problem** in the past two years? – 215 pple (71%) YES
75% of expensive hostels ↔ 63% of cheap hostels
- Have you been to a **gynecologist** in the past two years? – 108 pple (36%) YES
44% of emergency shelters ↔ 24% of cheap hostels
- Have you been to a **breast cancer** screening in the past two years? – 97 pple (22%) YES
29% of cheap hostels ↔ only one (1) person sleeping rough

PHYSICAL HEALTH

	Age groups						
	25-	26-35	36-45	46-55	56-65	65+	Total
Have you had a health problem with which you failed to see a doctor? (people)	3	5	15	33	38	7	101
Have you had a health problem with which you failed to see a doctor? (percent)	33%	24%	35%	43%	39%	25%	37%
Have you been to a gynecologist in the past two year? (people)	9	12	27	18	28	5	108
Have you been to a gynecologist in the past two year? (percent)	90%	57%	57%	35%	26%	16%	36%
Have you been to a breast cancer screening in the past two years? (people)	1	1	14	18	21	7	54
Have you been to a breast cancer screening in the past two years? (percent)	10%	5%	30%	22%	19%	22%	18%

PROBLEMS BY SERVICE

Type of Service	Three most frequently mentioned problems
DAY CENTRE	<ul style="list-style-type: none"> Cleanliness Security, men Intimate relationships/stealing
EMERGENCY SHELTER	<ul style="list-style-type: none"> Cleanliness Conflicts between women Addiction
CHEAP HOSTEL	<ul style="list-style-type: none"> Cleanliness Conflicts between women Health issues
EXPENSIVE HOSTEL	<ul style="list-style-type: none"> Mental health Cleanliness Financial problems/housing

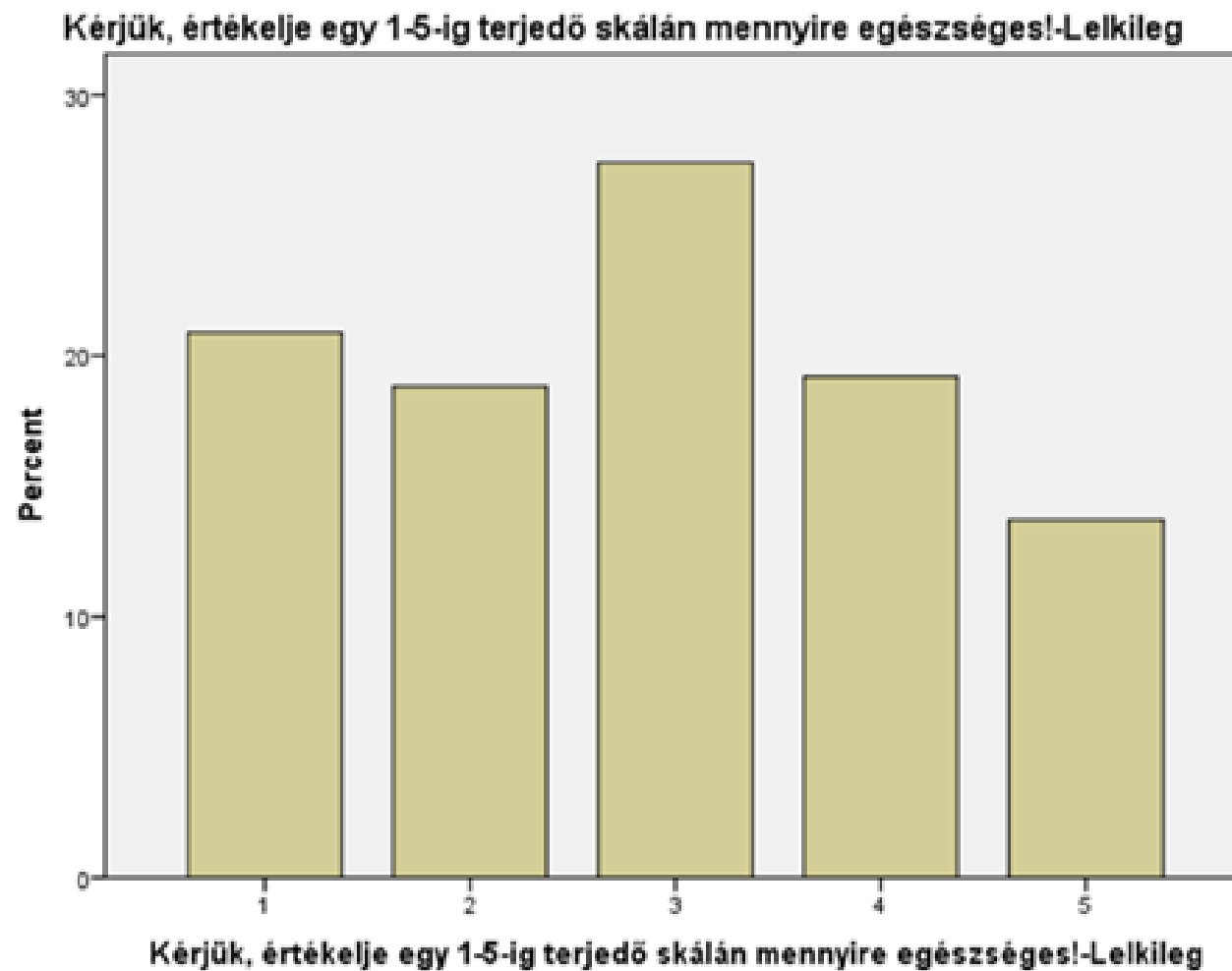
„WHAT KIND OF HEALTH PROBLEMS DO YOU HAVE?“

1. Psychiatric problems (94)
2. Spinal and related to movement (92)
3. Blood pressure (75)
4. Other cardiac problem (65)
5. Respiratory (42)
6. Diabetes (27)
7. Digestion (26)

Weakness/tiredness (9), gynecological (8), osteoporosis (8), urine dripping (6)

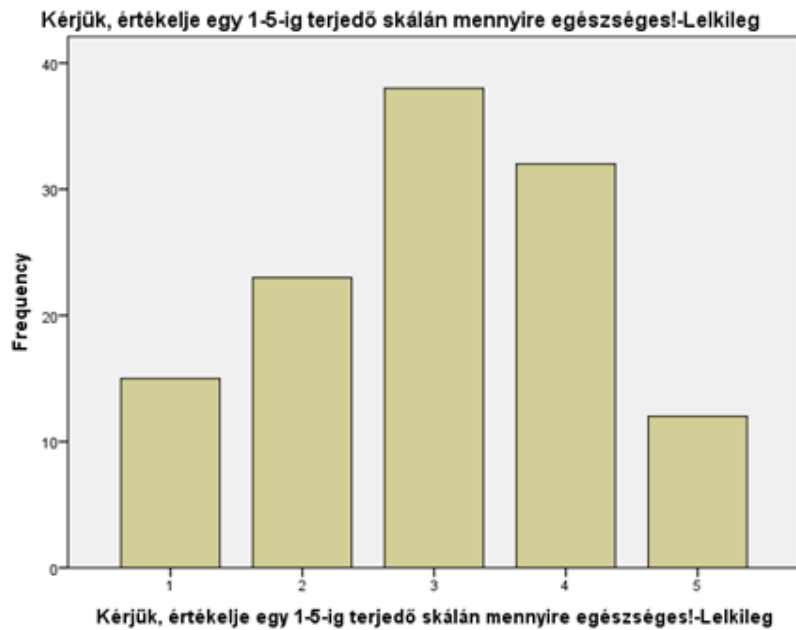
MENTAL HEALTH

1 Very bad
...
5 Excellent

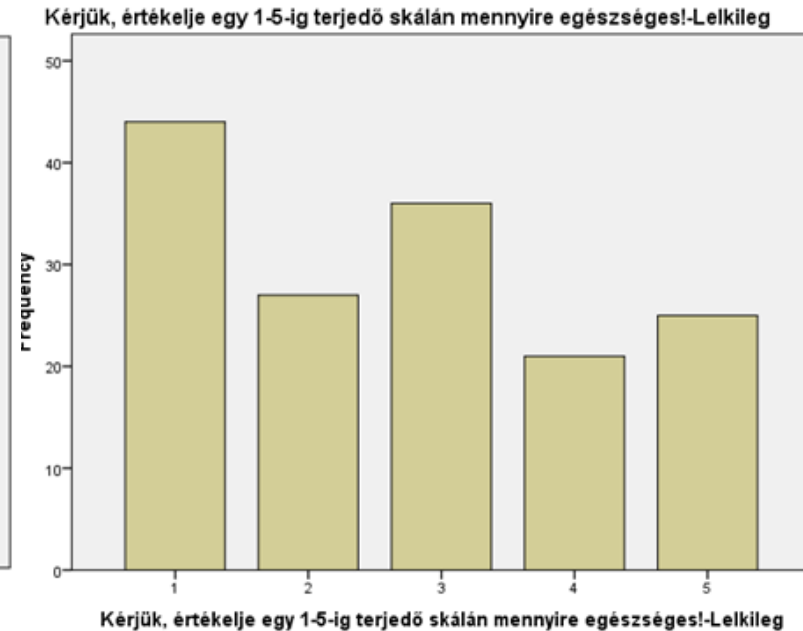


MENTAL HEALTH

Hostels



Emergency shelters



Rough sleepers



PREGNANCIES, CHILDREN

- ❑ Have you been pregnant since you have become homeless? 36
Out of the 100 women under 45 years of age 30 had been pregnant
- ❑ Have you had an abortion since you have become homeless? 20
- ❑ Have you had a miscarriage since you have become homeless? 19

45 women have children under 18.

23 kids – no contact

15 kids – 1-6 times in 2017

47 kids – more than 6

Age of kids	#
14-18	24
6_14	41
<5	27

„WOULD YOU
LIKE TO HAVE
ACCESS TO...?“

	YES responses(N=301)	
	#	%
a hairdresser?	228	76%
women-only day centres?	188	63%
dental care?	185	62%
a beautician?	145	48%
massage?	129	43%
group activities?	129	43%
manicure?	118	39%
psychologist?	115	38%
gynecological examination?	114	38%
Talking with a gynecologist?	89	30%

HOW DO WE RESPOND?

Women-only safe space in a day centre

What we have funding for	What we want to secure
Birth control	Gynecologue/Nurse
Toiletries	More toiletries
Support with visiting children	Beautician
	Manicure
Healthy food	Pedicure
Clothing	Underwear
Hairdressers	



THANK YOU FOR YOUR ATTENTION!

Boróka Fehér

(feher.boroka@bmszki.hu)

Ivetta Kovács (bohinj@gmail.com)