

# **GENDERED MANAGEMENT OF FAMILY HOUSING RESOURCES AND WOMEN'S HOMELESSNESS IN POLAND**

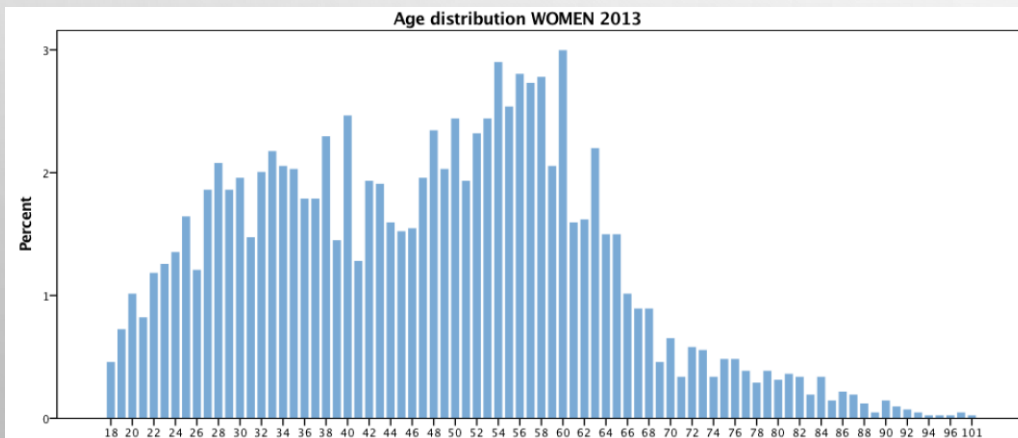
KATARZYNA DĘBSKA & MAGDALENA MOSTOWSKA  
UNIVERSITY OF WARSAW, POLAND

# THEORETICAL STARTING POINT

- NEW ORTHODOXY
  - PERSONAL CAPACITY
  - ACCESS TO INFORMAL SUPPORT
  - ACCESS TO FORMAL SUPPORT
- PATHWAYS APPROACH (CLAPHAM 2003)
- GENDERED PATHWAYS THROUGH HOMELESSNESS
- HOMELESSNESS AS NAVIGATION (PLEACE 2016)
- NEED TO STUDY SPECIFIC SUBGROUPS IN A LOCAL CONTEXT

# WOMEN'S HOMELESSNESS IN POLAND

- ABOUT 15% OF HOMELESS POPULATION COUNTED
- TWO DISTINCT AGE GROUPS (YOUNG – EPISODIC, OLD – CHRONIC HOMELESSNESS)
- OLDER GROUP IN MAINSTREAM HOMELESSNESS SERVICES



	Young women	Older women
“Deserving”	Victims of DV	Sick and disabled
“Undeserving”	Welfare “pathological” mothers	Rough sleeping/alcohol users

# ABOUT THE PROJECT

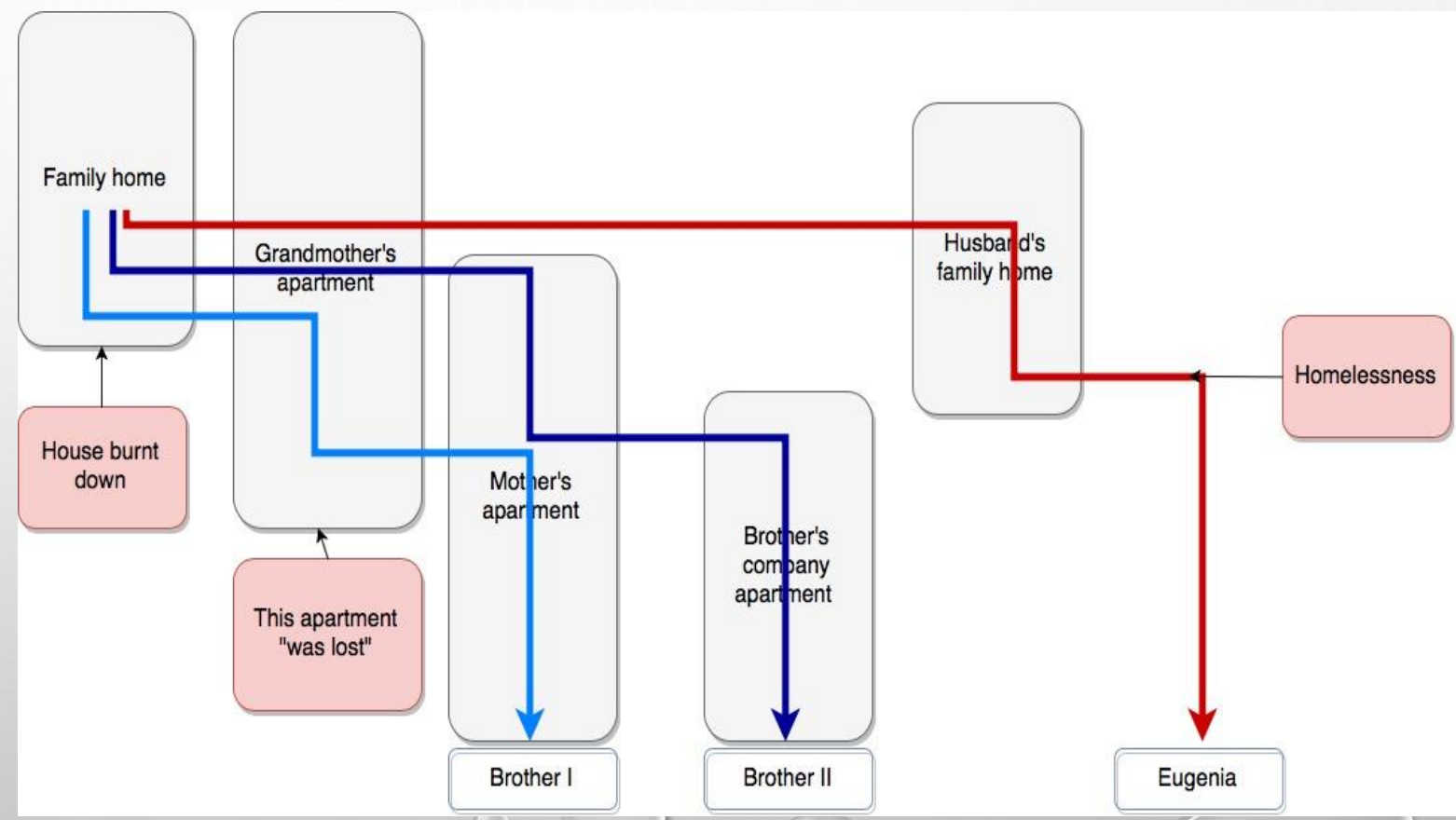
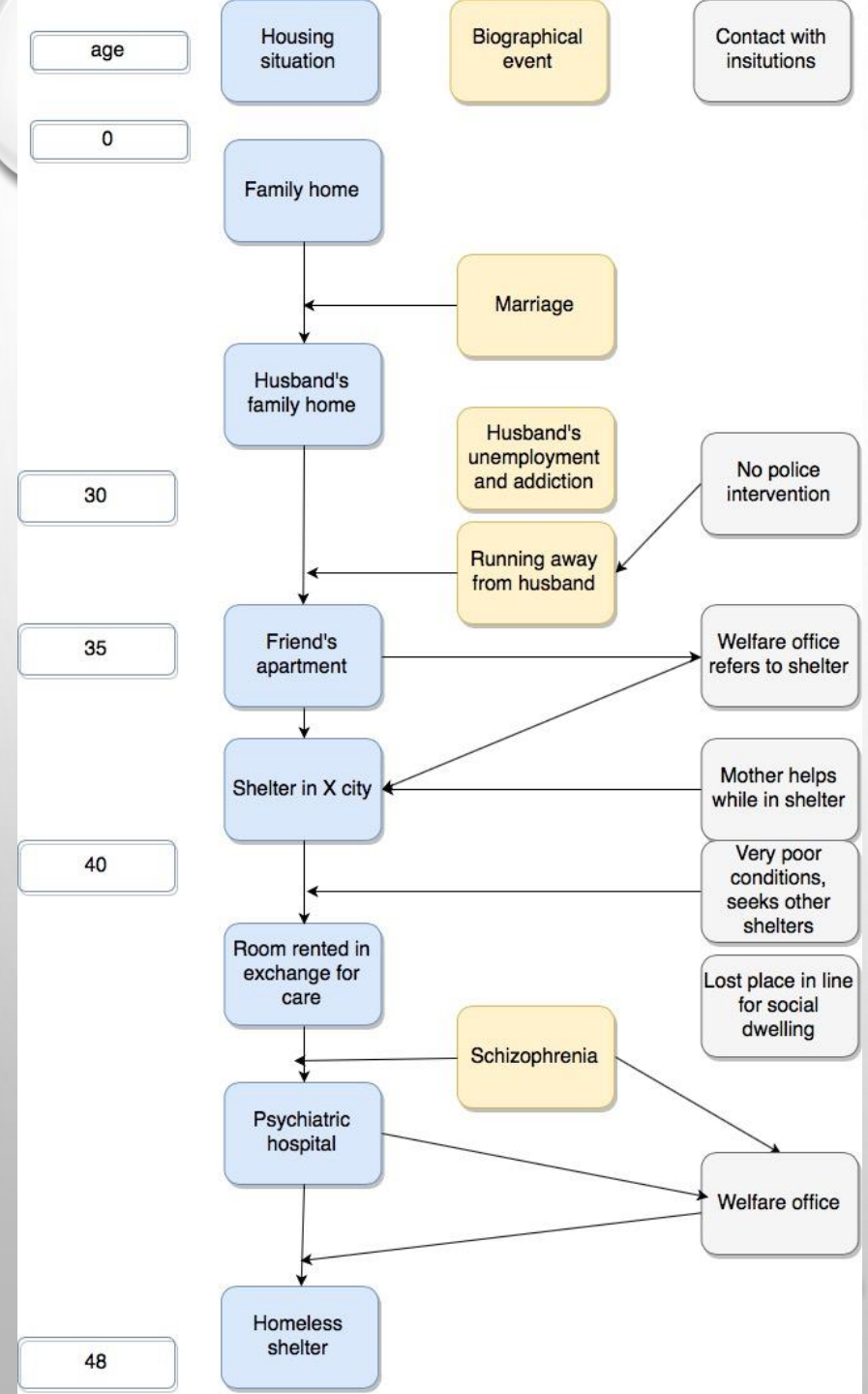
- PODKARPACIE REGION
  - CONSERVATIVE, POOR, EMIGRATION
  - HOMELESSNESS SERVICES MONOPOLIZED BY CATHOLIC ORGANIZATIONS
  - LACK OF NURSING SERVICES
- 19 LIFE STORY INTERVIEWS IN 3 SHELTERS

# WOMEN'S PATHWAYS INTO SHELTER

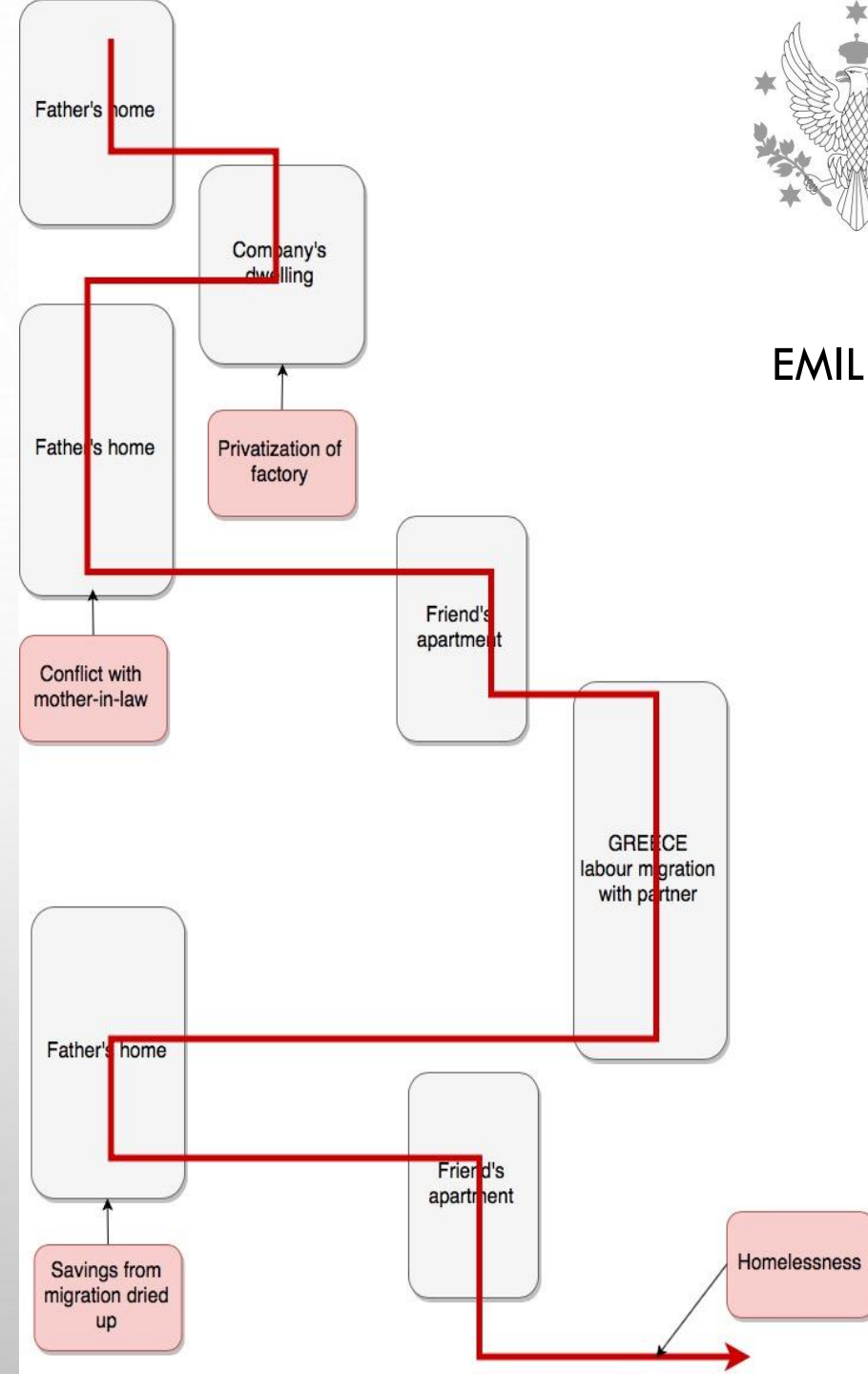
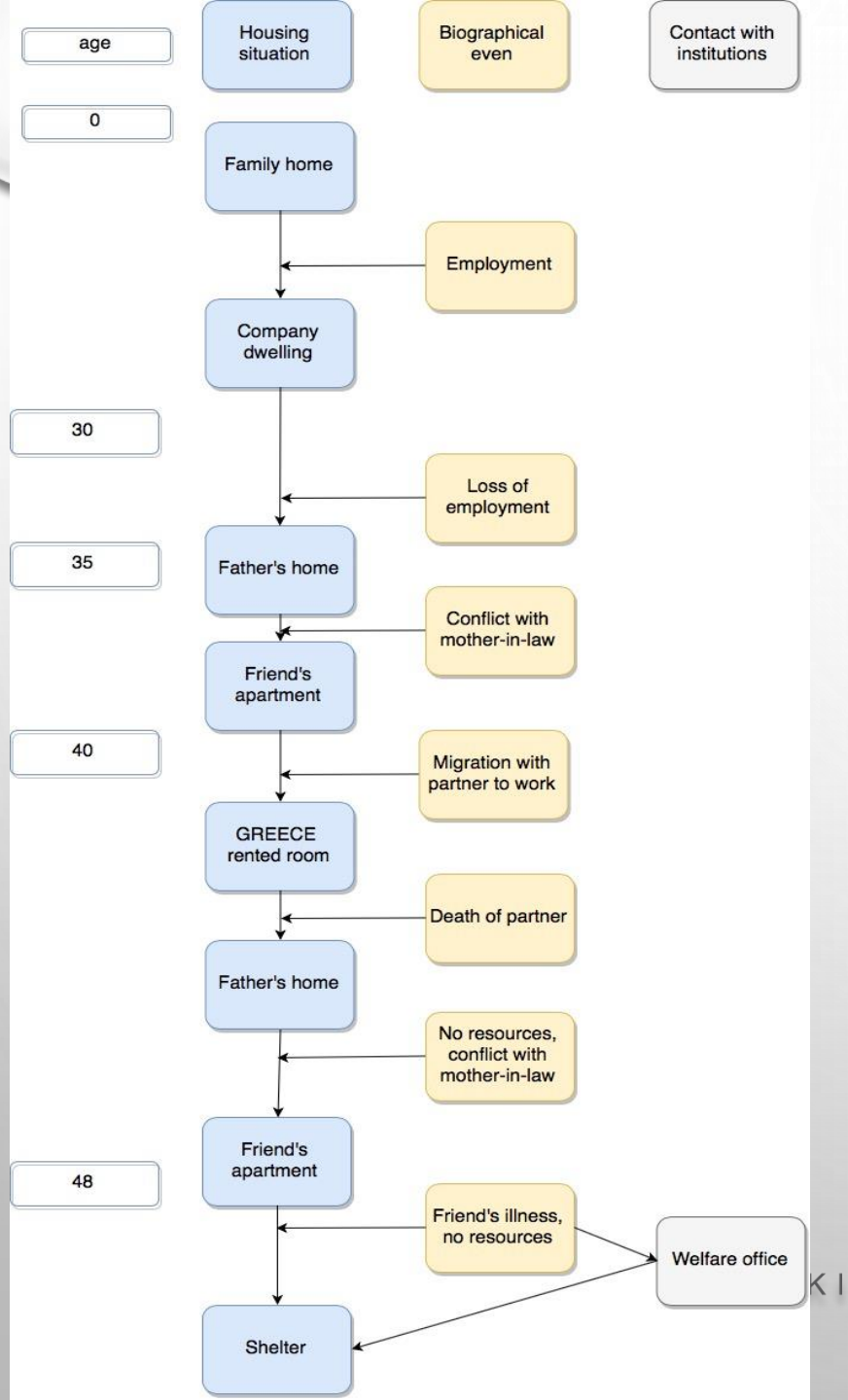
- POOR REGION WITH SUBSTANDARD DWELLINGS
- LOW SKILLED WORK, LOW PENSIONS
- TRANSFORMATION
- LACK OF INSTITUTIONAL SOLUTIONS
- FAMILY VIOLENCE AND RELATIONSHIP BREAK DOWN
- LIMITED FAMILY HOUSING RESOURCES

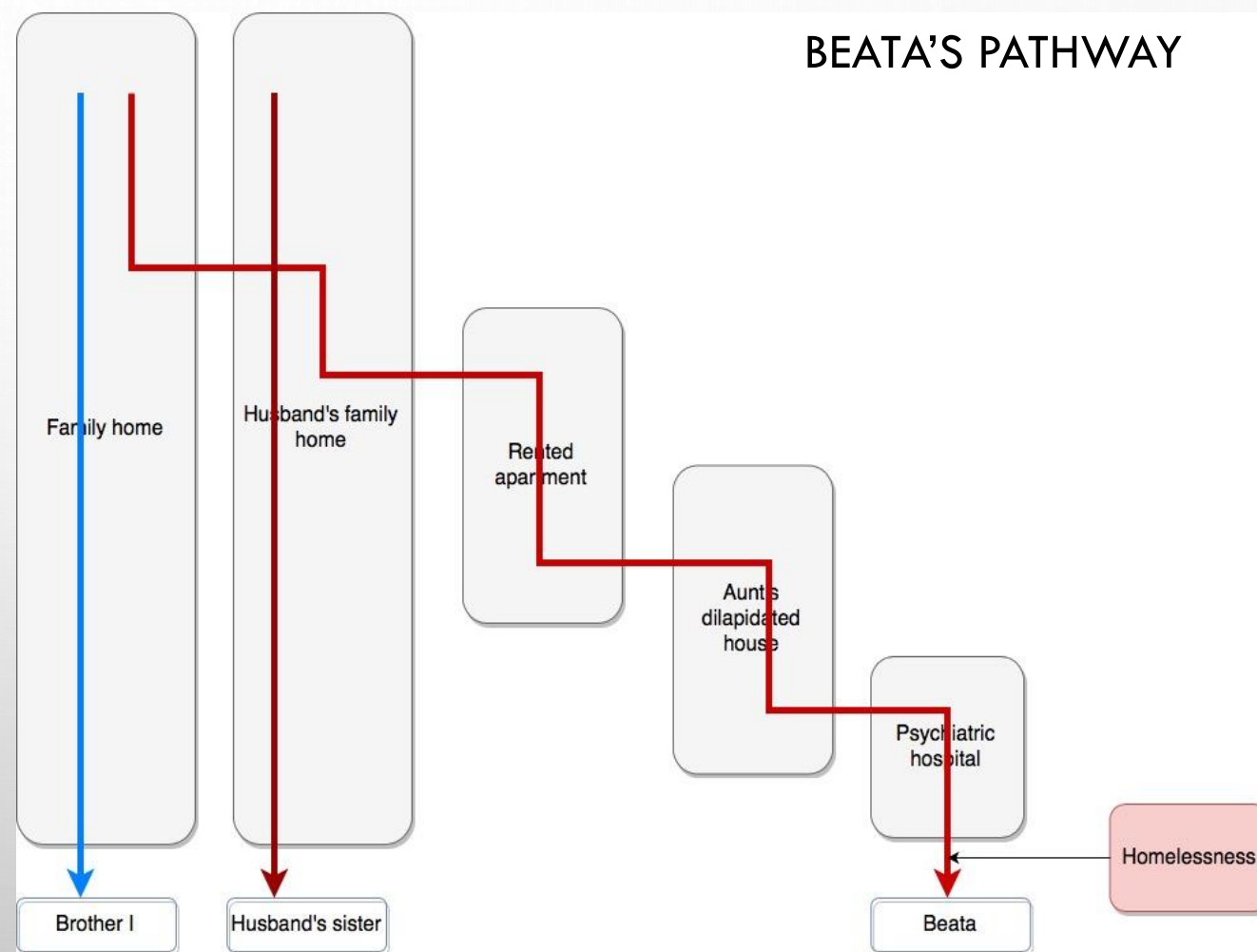
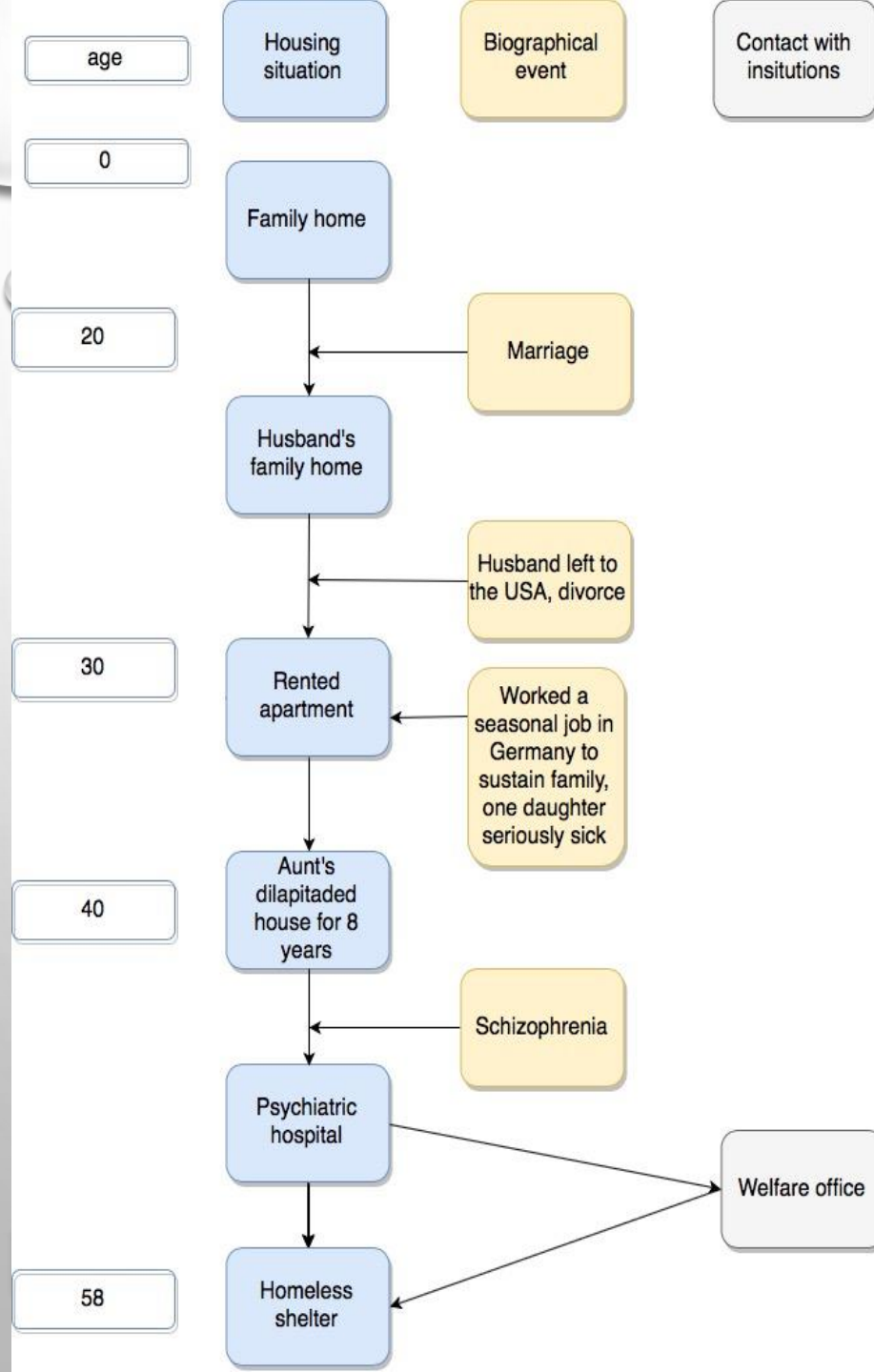


## EUGENIA'S PATHWAY



## EMILIA'S PATHWAY







# CONCLUSION

- GENDERED MANAGING OF FAMILY HOUSING RESOURCES
- LATE CONTACT WITH FORMAL SUPPORT
- NO FLOATING SUPPORT (INHABITANTS OF DILAPIDATED HOUSING)
- LACK OF NURSING AND PSYCHIATRIC CARE
- LACK OF INSTITUTIONS FOR DV AT OLDER AGE
- NO SUPPORT FOR THESIS THAT OLDER WOMEN IN SHELTERS HAVE FREQUENT INTERACTIONS WITH SERVICES AND COMPLEX SUPPORT NEEDS (ADDICTIONS)

*THIS PAPER IS WRITTEN THANKS TO RESEARCH FINANCED BY THE POLISH NATIONAL SCIENCE  
CENTRE (PROJECT NO. 2015/17/B/HS6/04191).*